

Recombinant Human ENO1/Alpha-enolase Protein, C-MAT

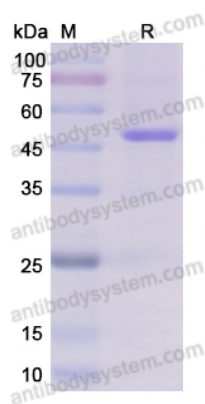
Summary

Catalog No.	EHC21201
Alternative Names	Non-neural enolase, 2-phospho-D-glycerate hydro-lyase, MPB-1, ENO1, Plasminogen-binding protein, Enolase 1, C-myc promoter-binding protein, Alpha-enolase, MBP-1, MBPB1, MPB1, ENO1L1, NNE, Phosphopyruvate hydratase
Form	Lyophilized
Storage buffer	Lyophilized from a solution in PBS pH 7.4, 0.02% NLS, 1mM EDTA, 4% Trehalose, 1% Mannitol.
Purity	>90% as determined by SDS-PAGE.
Applications	ELISA, Immunogen, SDS-PAGE, WB, Bioactivity testing in progress
Endotoxin level	Please contact with the lab for this information.
Expression system	Insect Cells
Accession	P06733
Protein length	Met1-Lys434
Nature	Recombinant
Predicted molecular weight	48.4 kDa
Stability and Storage	Use a manual defrost freezer and avoid repeated freeze thaw cycles. Store at 2 to 8°C for frequent use. Store at -20 to -80°C for twelve months from the date of receipt.
Reconstitution	Reconstitute in sterile water for a stock solution.

Recombinant Proteins & Antibodies

Species	Homo sapiens (Human)
Shipping	In general, proteins are provided as lyophilized powder/frozen liquid. They are shipped out with dry ice/blue ice unless customers require otherwise.
Note	For research use only.

Data Image



SDS-PAGE

SDS PAGE for Recombinant Human ENO1 / Alpha-enolase