

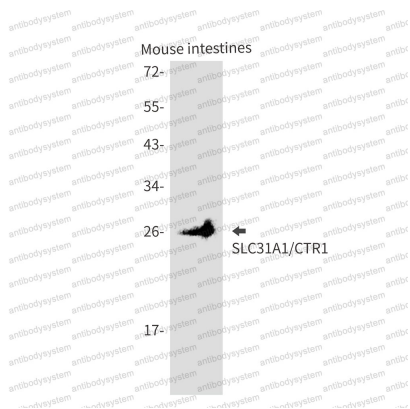
Anti-SLC31A1 Antibody (R1D86)

Summary

Catalog No.	RHA52601
Clone ID	R1D86
Host species	Rabbit
Tested applications	WB: 1:500-1:1000
Species reactivity	Human, Mouse, Rat, Hamster
Form	Liquid
Storage buffer	0.01M PBS, pH 7.4, 0.05% BSA, 50% Glycerol, 0.05% Sodium azide.
Concentration	1 mg/ml
Purity	>95% by SDS-PAGE.
Clonality	Monoclonal
Isotype	IgG
Applications	WB
Target	hCTR1, SLC31A1, COPT1, High affinity copper uptake protein 1, CTR1, Solute carrier family 31 member 1, Copper transporter 1
Purification	Protein A/G purified from cell culture supernatant.
Endotoxin level	Please contact with the lab for this information.
Accession	O15431
Stability and Storage	Use a manual defrost freezer and avoid repeated freeze thaw cycles. Store at 4 °C for frequent use. Store at -20 °C for twelve months from the date of receipt.

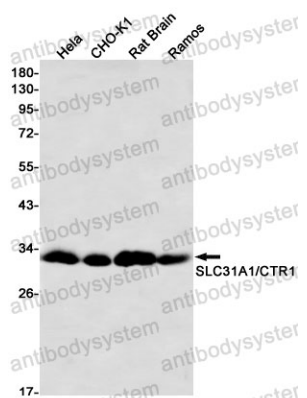
Note For research use only.

Data Image



Western blot

Western blot analysis of SLC31A1/CTR1 in mouse intestines lysates using SLC31A1 antibody.



Western blot

Western blot analysis of SLC31A1/CTR1 in HeLa, CHO-K1, rat Brain, Ramos lysates using SLC31A1/CTR1 antibody.