

Anti-CHUK Antibody (R1D50)

Summary

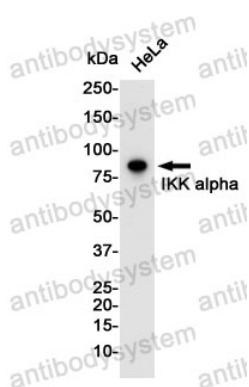
Catalog No.	RHA41601
Clone ID	R1D50
Host species	Rabbit
Tested applications	WB: 1:500-1:1000
Species reactivity	Human, Mouse, Rat
Form	Liquid
Storage buffer	0.01M PBS, pH 7.4, 0.05% BSA, 50% Glycerol, 0.05% Sodium azide.
Concentration	1 mg/ml
Purity	>95% by SDS-PAGE.
Clonality	Monoclonal
Isotype	IgG
Applications	WB
Target	IKK-A, I-kappa-B kinase alpha, Transcription factor 16, TCF-16, CHUK, NFKB1A, Inhibitor of nuclear factor kappa-B kinase subunit alpha, IKKA, TCF16, Nuclear factor NF-kappa-B inhibitor kinase alpha, I-kappa-B kinase 1, Conserved helix-loop-helix ubiquitous kinase, IKK1, IkappaB kinase, IKK-alpha, IkbKA
Purification	Protein A/G purified from cell culture supernatant.
Endotoxin level	Please contact with the lab for this information.
Accession	O15111

Stability and Storage

Use a manual defrost freezer and avoid repeated freeze thaw cycles. Store at 4 °C for frequent use. Store at -20 °C for twelve months from the date of receipt.

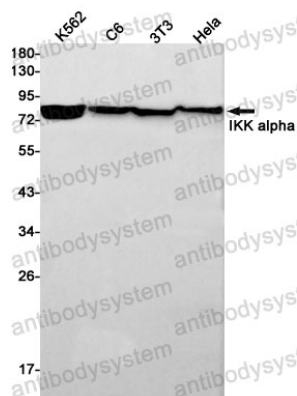
Note

For research use only.

Data Image

Western blot

Western blot analysis of IKK alpha in HeLa lysates using IKK alpha antibody.



Western blot

Western blot analysis of IKK alpha in K562, C6, 3T3, HeLa lysates using IKK alpha antibody.