

Anti-DCLK1 Antibody (R1D48)

Summary

Catalog No.	RHA40703
Clone ID	R1D48
Host species	Rabbit
Tested applications	IF: 1:50-1:200, IHC: 1:50-1:100, WB: 1:500-1:1000
Species reactivity	Human, Mouse, Rat
Form	Liquid
Storage buffer	0.01M PBS, pH 7.4, 0.05% BSA, 50% Glycerol, 0.05% Sodium azide.
Concentration	1 mg/ml
Purity	>95% by SDS-PAGE.
Clonality	Monoclonal
Isotype	IgG
Applications	IF, IHC, WB
Target	Doublecortin-like and CAM kinase-like 1, DCAMKL1, KIAA0369, Doublecortin-like kinase 1, DCLK1, Doublecortin domain-containing protein 3A, Serine/threonine-protein kinase DCLK1, DCDC3A
Purification	Protein A/G purified from cell culture supernatant.
Endotoxin level	Please contact with the lab for this information.
Accession	O15075

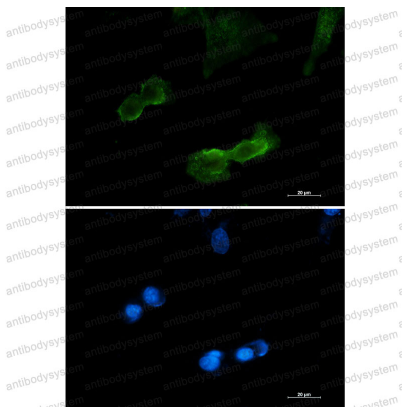
Stability and Storage

Use a manual defrost freezer and avoid repeated freeze thaw cycles. Store at 4 °C for frequent use. Store at -20 °C for twelve months from the date of receipt.

Note

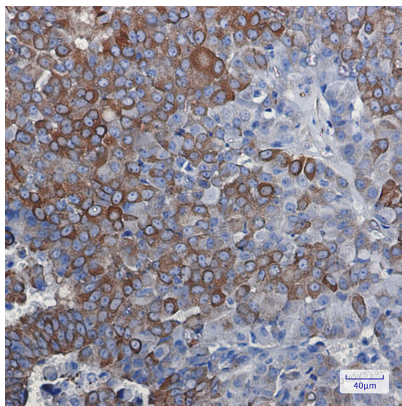
For research use only.

Data Image



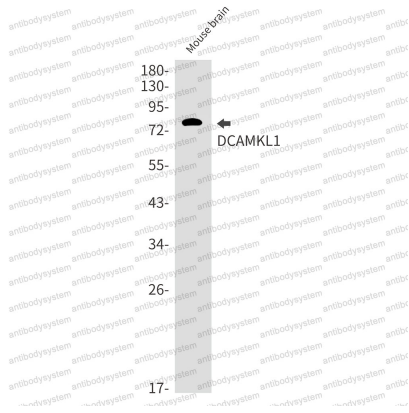
Immunofluorescence

Immunocytochemistry analysis of DCAMKL1 (green) in U87-MG using DCAMKL1 antibody, and DAPI(blue).



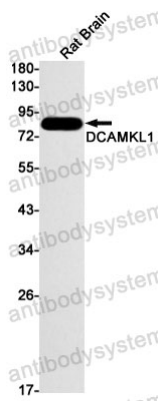
Immunohistochemical

Immunohistochemistry analysis of paraffin-embedded Human breast cancer using DCAMKL1 antibody. High-pressure and temperature Sodium Citrate pH 6.0 was used for antigen retrieval.



Western blot

Western blot analysis of DCAMKL1 in mouse brain lysates using DCAMKL1 antibody.



Western blot

Western blot analysis of DCAMKL1 in rat Brain lysates using DCAMKL1 antibody