

# Anti-PER2 Antibody (R1D46)

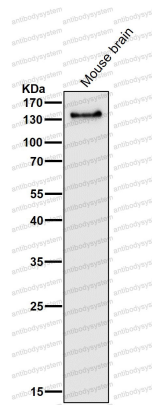
## Summary

---

<b>Catalog No.</b>	RHA39601
<b>Clone ID</b>	R1D46
<b>Host species</b>	Rabbit
<b>Tested applications</b>	FCM: 1:20-1:100, IF: 1:50-1:200, WB: 1:1000-1:2000
<b>Species reactivity</b>	Human
<b>Form</b>	Liquid
<b>Storage buffer</b>	0.01M PBS, pH 7.4, 0.05% BSA, 50% Glycerol, 0.05% Sodium azide.
<b>Concentration</b>	1 mg/ml
<b>Purity</b>	>95% by SDS-PAGE.
<b>Clonality</b>	Monoclonal
<b>Isotype</b>	IgG
<b>Applications</b>	FCM, IF, WB
<b>Target</b>	Circadian clock protein PERIOD 2, KIAA0347, Period circadian protein homolog 2, PER2, hPER2
<b>Purification</b>	Protein A/G purified from cell culture supernatant.
<b>Endotoxin level</b>	Please contact with the lab for this information.
<b>Accession</b>	O15055
<b>Stability and Storage</b>	Use a manual defrost freezer and avoid repeated freeze thaw cycles. Store at 4 °C for frequent use. Store at -20 °C for twelve months from the date of receipt.

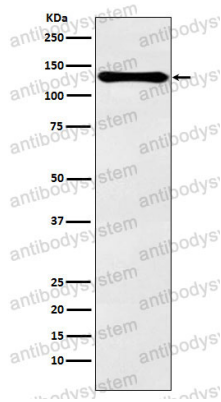
**Note** For research use only.

## Data Image



Western blot

All lanes use the Antibody at 1:2k dilution for 1 hour at room temperature.



Western blot

Western blot analysis of PER2 expression in HeLa cell lysate.