

Anti-MYL12B Antibody (R1D42)

Summary

Catalog No.	RHA35601
Clone ID	R1D42
Host species	Rabbit
Tested applications	IF: 1:50-1:200, IHC: 1:100-1:200, WB: 1:1000-1:2000
Species reactivity	Human, Mouse, Rat
Form	Liquid
Storage buffer	0.01M PBS, pH 7.4, 0.05% BSA, 50% Glycerol, 0.05% Sodium azide.
Concentration	1 mg/ml
Purity	>95% by SDS-PAGE.
Clonality	Monoclonal
Isotype	IgG
Applications	IF, IHC, WB
Target	Myosin regulatory light chain MRLC2, MLC20, MYL12B, Myosin regulatory light chain 12B, Myosin regulatory light chain 20 kDa, MYLC2B, Myosin regulatory light chain 2-B, smooth muscle isoform, SHUJUN-1, MLC-2, MRLC2, MLC-2A
Purification	Protein A/G purified from cell culture supernatant.
Endotoxin level	Please contact with the lab for this information.
Accession	O14950

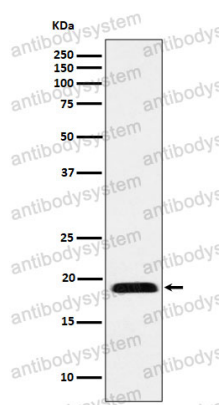
Stability and Storage

Use a manual defrost freezer and avoid repeated freeze thaw cycles. Store at 4 °C for frequent use. Store at -20 °C for twelve months from the date of receipt.

Note

For research use only.

Data Image



Western blot

Western blot analysis of MYL12B expression in Jurkat cell lysate.