

Anti-IKBKB Antibody (R1D37)

Summary

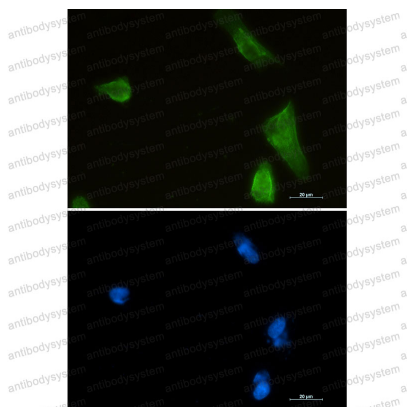
Catalog No.	RHA34301
Clone ID	R1D37
Host species	Rabbit
Tested applications	IF: 1:50-1:200, WB: 1:500-1:1000
Species reactivity	Human, Mouse, Rat
Form	Liquid
Storage buffer	0.01M PBS, pH 7.4, 0.05% BSA, 50% Glycerol, 0.05% Sodium azide.
Concentration	1 mg/ml
Purity	>95% by SDS-PAGE.
Clonality	Monoclonal
Isotype	IgG
Applications	IF, WB
Target	IKKB, IKK-beta, Serine/threonine protein kinase IKKB, I-kappa-B-kinase beta, Inhibitor of nuclear factor kappa-B kinase subunit beta, I-kappa-B kinase 2, IKKB, IKK-B, NFKBIKB, IKK2, Nuclear factor NF-kappa-B inhibitor kinase beta, IkbKB
Purification	Protein A/G purified from cell culture supernatant.
Endotoxin level	Please contact with the lab for this information.
Accession	O14920

Stability and Storage

Use a manual defrost freezer and avoid repeated freeze thaw cycles. Store at 4 °C for frequent use. Store at -20 °C for twelve months from the date of receipt.

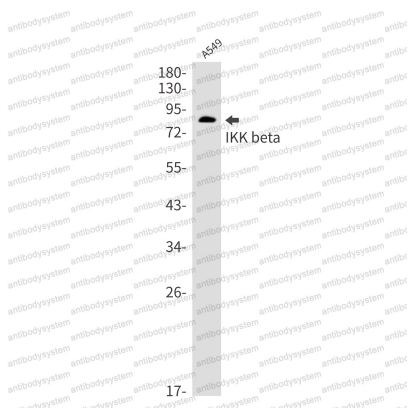
Note

For research use only.

Data Image

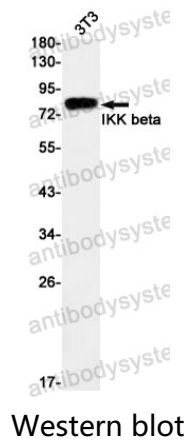
Immunofluorescence

Immunocytochemistry analysis of IKK beta (green) in U87-MG using IKK beta antibody, and DAPI(blue).



Western blot

Western blot analysis of IKK beta in A549 lysates using IKK beta antibody.



Western blot analysis of IKK beta in 3T3 lysates
using IKK beta antibody