

# Anti-MGST3 Antibody (R1D33)

## Summary

---

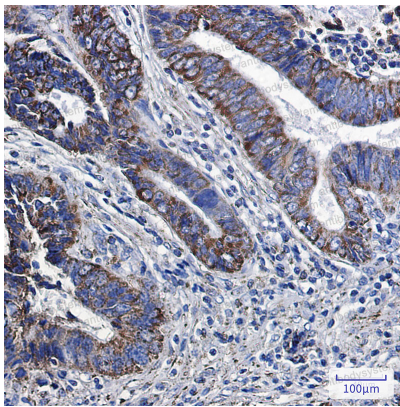
|                            |  |
|----------------------------|--|
| <b>Catalog No.</b>         | RHA33201   |
| <b>Clone ID</b>            | R1D33  |
| <b>Host species</b>        | Rabbit   |
| <b>Tested applications</b> | IHC: 1:50-1:100, IP: 1:20, WB: 1:500-1:1000  |
| <b>Species reactivity</b>  | Human  |
| <b>Form</b>                | Liquid   |
| <b>Storage buffer</b>      | 0.01M PBS, pH 7.4, 0.05% BSA, 50% Glycerol, 0.05% Sodium azide.  |
| <b>Concentration</b>       | 1 mg/ml  |
| <b>Purity</b>              | >95% by SDS-PAGE.  |
| <b>Clonality</b>           | Monoclonal   |
| <b>Isotype</b>             | IgG  |
| <b>Applications</b>        | IHC, IP, WB  |
| <b>Target</b>              | Microsomal GST-III, Microsomal glutathione S-transferase III, LTC <sub>4</sub> synthase MGST3, Microsomal GST-3, MGST3, Microsomal glutathione S-transferase 3, Glutathione peroxidase MGST3 |
| <b>Purification</b>        | Protein A/G purified from cell culture supernatant.  |
| <b>Endotoxin level</b>     | Please contact with the lab for this information.  |
| <b>Accession</b>           | O14880   |

**Stability and Storage**

Use a manual defrost freezer and avoid repeated freeze thaw cycles. Store at 4 °C for frequent use. Store at -20 °C for twelve months from the date of receipt.

**Note**

For research use only.

**Data Image**

Immunohistochemical

Immunohistochemistry analysis of paraffin-embedded Human colon cancer using MGST3 antibody. High-pressure and temperature Sodium Citrate pH 6.0 was used for antigen retrieval.



Western blot

Western blot analysis of MGST3 in K562, HeLa lysates using MGST3 antibody.