

Anti-BCKDK Antibody (R1D32)

Summary

Catalog No.	RHA33001
Clone ID	R1D32
Host species	Rabbit
Tested applications	WB: 1:500-1:1000
Species reactivity	Human, Mouse, Rat
Form	Liquid
Storage buffer	0.01M PBS, pH 7.4, 0.05% BSA, 50% Glycerol, 0.05% Sodium azide.
Concentration	1 mg/ml
Purity	>95% by SDS-PAGE.
Clonality	Monoclonal
Isotype	IgG
Applications	WB
Target	Branched-chain alpha-ketoacid dehydrogenase kinase, [3-methyl-2-oxobutanoate dehydrogenase [lipoamide]] kinase, mitochondrial, BCKDK, BCKD-kinase, BCKDHKIN
Purification	Protein A/G purified from cell culture supernatant.
Endotoxin level	Please contact with the lab for this information.
Accession	O14874

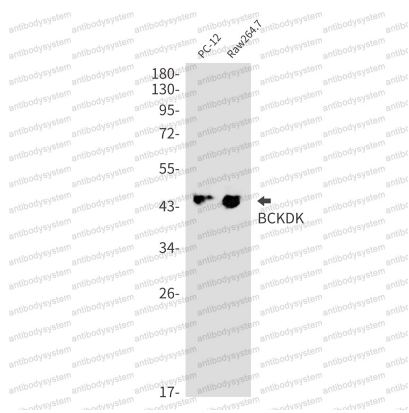
Stability and Storage

Use a manual defrost freezer and avoid repeated freeze thaw cycles. Store at 4 °C for frequent use. Store at -20 °C for twelve months from the date of receipt.

Note

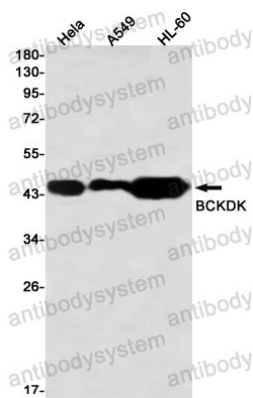
For research use only.

Data Image



Western blot

Western blot analysis of BCKDK in PC-12, Raw264.7 lysates using BCKDK antibody.



Western blot

Western blot analysis of BCKDK in HeLa, A549, HL-60 lysates using BCKDK antibody.