

Anti-TPP1 Antibody (R1D28)

Summary

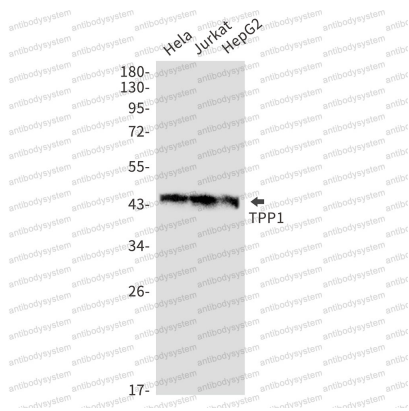
Catalog No.	RHA29601
Clone ID	R1D28
Host species	Rabbit
Tested applications	IHC: 1:50-1:100, WB: 1:500-1:1000
Species reactivity	Human
Form	Liquid
Storage buffer	0.01M PBS, pH 7.4, 0.05% BSA, 50% Glycerol, 0.05% Sodium azide.
Concentration	1 mg/ml
Purity	>95% by SDS-PAGE.
Clonality	Monoclonal
Isotype	IgG
Applications	IHC, WB
Target	Cell growth-inhibiting gene 1 protein, LPIC, Tripeptidyl-peptidase 1, Tripeptidyl aminopeptidase, Lysosomal pepstatin-insensitive protease, TPP1, CLN2, TPP-I, TPP-1, Tripeptidyl-peptidase I
Purification	Protein A/G purified from cell culture supernatant.
Endotoxin level	Please contact with the lab for this information.
Accession	O14773

Stability and Storage

Use a manual defrost freezer and avoid repeated freeze thaw cycles. Store at 4 °C for frequent use. Store at -20 °C for twelve months from the date of receipt.

Note

For research use only.

Data Image

Western blot

Western blot analysis of TPP1 in Hela, Jurkat, HepG2 lysates using TPP1 antibody.