

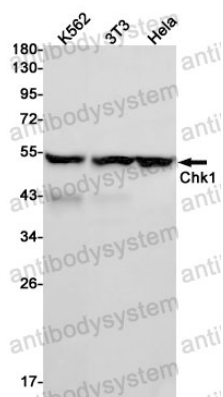
Anti-CHEK1 Antibody (R1D26)

Summary

Catalog No.	RHA29001
Clone ID	R1D26
Host species	Rabbit
Tested applications	WB: 1:500-1:1000
Species reactivity	Human, Mouse, Rat
Form	Liquid
Storage buffer	0.01M PBS, pH 7.4, 0.05% BSA, 50% Glycerol, 0.05% Sodium azide.
Concentration	1 mg/ml
Purity	>95% by SDS-PAGE.
Clonality	Monoclonal
Isotype	IgG
Applications	WB
Target	Cell cycle checkpoint kinase, Serine/threonine-protein kinase Chk1, Checkpoint kinase-1, CHK1, CHK1 checkpoint homolog, CHEK1
Purification	Protein A/G purified from cell culture supernatant.
Endotoxin level	Please contact with the lab for this information.
Accession	O14757
Stability and Storage	Use a manual defrost freezer and avoid repeated freeze thaw cycles. Store at 4 °C for frequent use. Store at -20 °C for twelve months from the date of receipt.

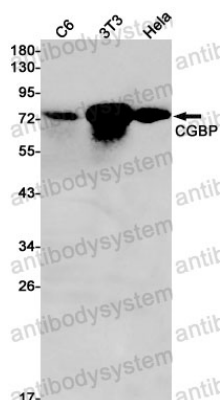
Note

For research use only.

Data Image

Western blot

Western blot analysis of Chk1 in K562 lysates using Chk1 antibody.



Western blot

Western blot analysis of Chk1 in K562, 3T3, HeLa lysates using Chk1 antibody.