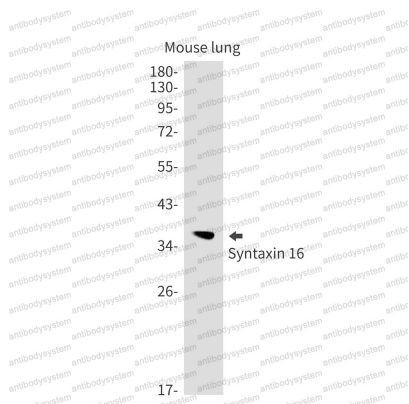


Anti-STX16 Antibody (R1D23)

Summary

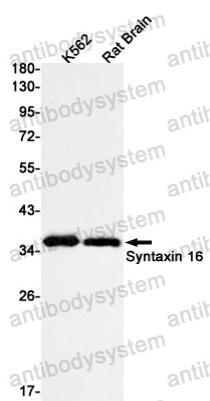
Catalog No.	RHA26301
Clone ID	R1D23
Host species	Rabbit
Tested applications	WB: 1:500-1:1000
Species reactivity	Human, Mouse, Rat
Form	Liquid
Storage buffer	0.01M PBS, pH 7.4, 0.05% BSA, 50% Glycerol, 0.05% Sodium azide.
Concentration	1 mg/ml
Purity	>95% by SDS-PAGE.
Clonality	Monoclonal
Isotype	IgG
Applications	WB
Target	STX16, Syntaxin-16, Syn16
Purification	Protein A/G purified from cell culture supernatant.
Endotoxin level	Please contact with the lab for this information.
Accession	O14662
Stability and Storage	Use a manual defrost freezer and avoid repeated freeze thaw cycles. Store at 4 °C for frequent use. Store at -20 °C for twelve months from the date of receipt.
Note	For research use only.

Data Image



Western blot

Western blot analysis of Syntaxin 16 in mouse lung lysates using Syntaxin 16 antibody.



Western blot

Western blot analysis of Syntaxin 16 in K562, rat Brain lysates using Syntaxin 16 antibody.