

# Anti-DPYSL4 Antibody (R1D17)

## Summary

---

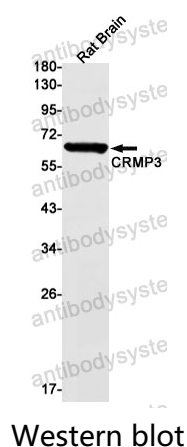
<b>Catalog No.</b>	RHA21701
<b>Clone ID</b>	R1D17
<b>Host species</b>	Rabbit
<b>Tested applications</b>	WB: 1:500-1:1000
<b>Species reactivity</b>	Rat
<b>Form</b>	Liquid
<b>Storage buffer</b>	0.01M PBS, pH 7.4, 0.05% BSA, 50% Glycerol, 0.05% Sodium azide.
<b>Concentration</b>	1 mg/ml
<b>Purity</b>	>95% by SDS-PAGE.
<b>Clonality</b>	Monoclonal
<b>Isotype</b>	IgG
<b>Applications</b>	WB
<b>Target</b>	Collapsin response mediator protein 3, DRP-4, ULIP-4, Dihydropyrimidinase-related protein 4, CRMP3, ULIP4, DPYSL4, UNC33- like phosphoprotein 4, CRMP-3
<b>Purification</b>	Protein A/G purified from cell culture supernatant.
<b>Endotoxin level</b>	Please contact with the lab for this information.
<b>Accession</b>	O14531

**Stability and Storage**

Use a manual defrost freezer and avoid repeated freeze thaw cycles. Store at 4 °C for frequent use. Store at -20 °C for twelve months from the date of receipt.

**Note**

For research use only.

**Data Image**

Western blot analysis of CRMP3 in rat Brain lysates using CRMP3 antibody.