

Anti-ARID1A Antibody (R1D11)

Summary

Catalog No.	RHA19901
Clone ID	R1D11
Host species	Rabbit
Tested applications	IF: 1:50-1:200, IHC: 1:100-1:200, WB: 1:1000-1:2000
Species reactivity	Human, Mouse, Rat
Form	Liquid
Storage buffer	0.01M PBS, pH 7.4, 0.05% BSA, 50% Glycerol, 0.05% Sodium azide.
Concentration	1 mg/ml
Purity	>95% by SDS-PAGE.
Clonality	Monoclonal
Isotype	IgG
Applications	IF, IHC, WB
Target	BRG1-associated factor 250, OSA1, ARID domain-containing protein 1A, Osa homolog 1, BRG1-associated factor 250a, hOSA1, C1orf4, SMARCF1, AT-rich interactive domain-containing protein 1A, SWI/SNF-related, matrix-associated, actin-dependent regulator of chromatin subfamily F member 1, BAF250, SWI/SNF complex protein p270, ARID1A, SWI-like protein, hELD, B120, BAF250A
Purification	Protein A/G purified from cell culture supernatant.
Endotoxin level	Please contact with the lab for this information.
Accession	O14497

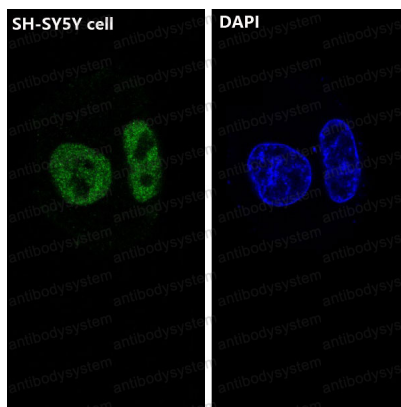
Stability and Storage

Use a manual defrost freezer and avoid repeated freeze thaw cycles. Store at 4 °C for frequent use. Store at -20 °C for twelve months from the date of receipt.

Note

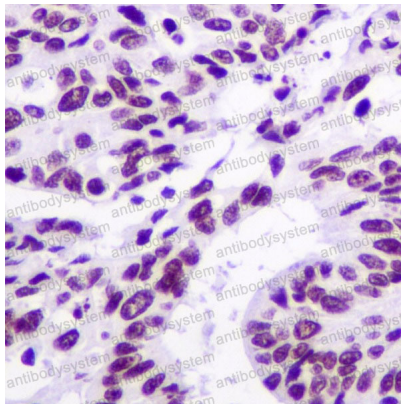
For research use only.

Data Image



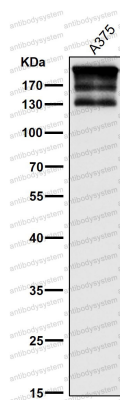
Immunofluorescence

Immunofluorescent analysis of SH-SY5Y cells, using ARID1A Antibody.



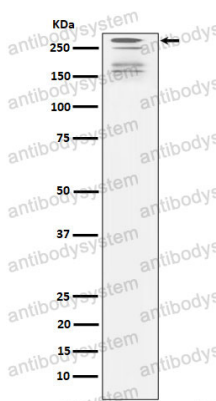
Immunohistochemical

Immunohistochemical analysis of paraffin-embedded human adenocarcinoma of colon, using ARID1A Antibody.



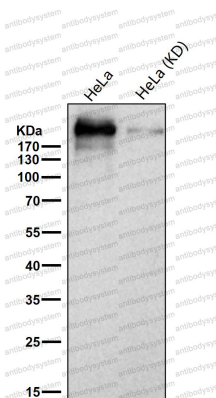
Western blot

All lanes use the Antibody at 1:1K dilution for 1 hour at room temperature.



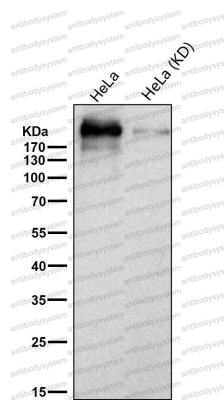
Western blot

Western blot analysis of ARID1A expression in 293 cell lysate.



Western blot

All lanes use the Antibody at 1:1K dilution for 1 hour at room temperature.



Western blot

All lanes use the Antibody at 1:1K dilution for 1 hour at room temperature.