

Anti-UBE2C Antibody (R1D06)

Summary

Catalog No.	RHA19001
Clone ID	R1D06
Host species	Rabbit
Tested applications	IF: 1:50-1:200, IHC: 1:50-1:100, IP: 1:20, WB: 1:500-1:1000
Species reactivity	Human, Mouse, Rat
Form	Liquid
Storage buffer	0.01M PBS, pH 7.4, 0.05% BSA, 50% Glycerol, 0.05% Sodium azide.
Concentration	1 mg/ml
Purity	>95% by SDS-PAGE.
Clonality	Monoclonal
Isotype	IgG
Applications	IF, IHC, IP, WB
Target	E2 ubiquitin-conjugating enzyme C, UBE2C, Ubiquitin carrier protein C, UbcH10, (E3-independent) E2 ubiquitin-conjugating enzyme C, Ubiquitin-conjugating enzyme E2 C, Ubiquitin-protein ligase C, UBCH10
Purification	Protein A/G purified from cell culture supernatant.
Endotoxin level	Please contact with the lab for this information.
Accession	O00762

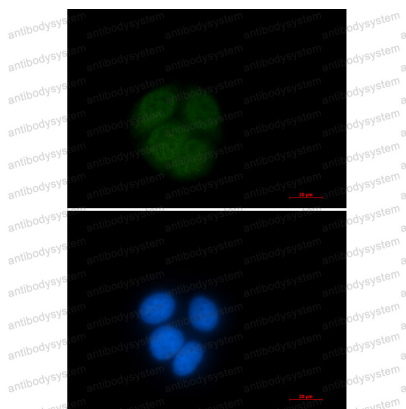
Stability and Storage

Use a manual defrost freezer and avoid repeated freeze thaw cycles. Store at 4 °C for frequent use. Store at -20 °C for twelve months from the date of receipt.

Note

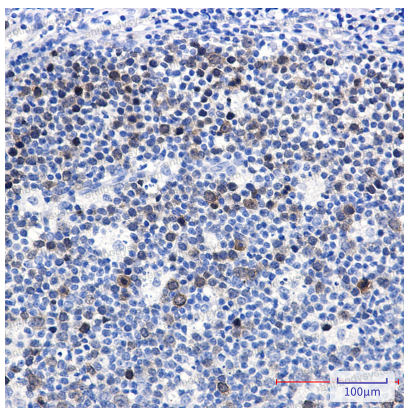
For research use only.

Data Image



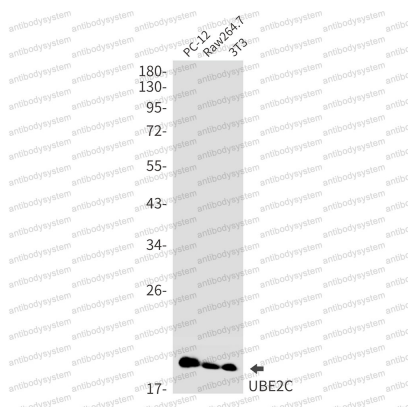
Immunofluorescence

Immunocytochemistry analysis of Ubiquitin Conjugating Enzyme E2 C (green) in HeLa using Ubiquitin Conjugating Enzyme E2 C antibody, and DAPI(blue).



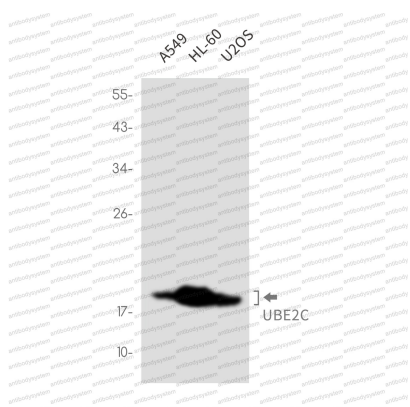
Immunohistochemical

Immunohistochemistry analysis of paraffin-embedded Human tonsil using UBE2C antibody. High-pressure and temperature Sodium Citrate pH 6.0 was used for antigen retrieval.



Western blot

Western blot analysis of UBE2C in PC-12, Raw264.7, 3T3 lysates using UBE2C antibody.



Western blot

Western blot analysis of UBE2C in A549, HL-60, U2OS lysates using UBE2C antibody