

Anti-SUPT5H Antibody (R1C77)

Summary

Catalog No.	RHA07601
Clone ID	R1C77
Host species	Rabbit
Tested applications	IF: 1:50-1:200, IHC: 1:50-1:100, WB: 1:500-1:1000
Species reactivity	Human
Form	Liquid
Storage buffer	0.01M PBS, pH 7.4, 0.05% BSA, 50% Glycerol, 0.05% Sodium azide.
Concentration	1 mg/ml
Purity	>95% by SDS-PAGE.
Clonality	Monoclonal
Isotype	IgG
Applications	IF, IHC, WB
Target	DSIF p160, Tat-cotransactivator 1 protein, DSIF large subunit, DRB sensitivity-inducing factor 160 kDa subunit, Transcription elongation factor SPT5, SPT5H, SUPT5H, DRB sensitivity-inducing factor large subunit, SPT5, Tat-CT1 protein, hSPT5
Purification	Protein A/G purified from cell culture supernatant.
Endotoxin level	Please contact with the lab for this information.
Accession	O00267

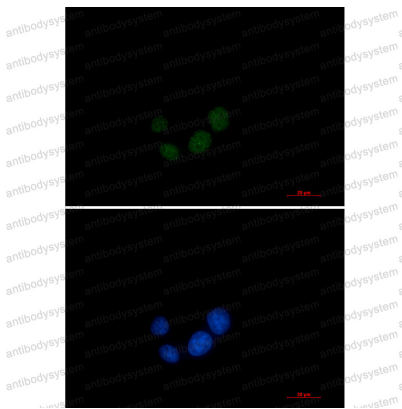
Stability and Storage

Use a manual defrost freezer and avoid repeated freeze thaw cycles. Store at 4 °C for frequent use. Store at -20 °C for twelve months from the date of receipt.

Note

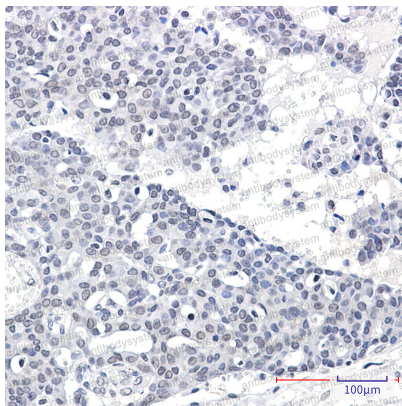
For research use only.

Data Image



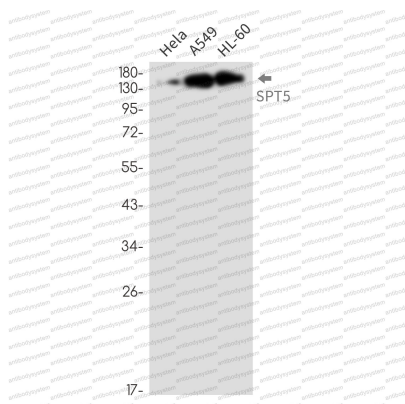
Immunofluorescence

Immunocytochemistry analysis of SPT5 (green) in Hela using SPT5 antibody, and DAPI (blue).



Immunohistochemical

Immunohistochemistry analysis of paraffin-embedded Human breast cancer tissue using SPT5 antibody. High-pressure and temperature Sodium Citrate pH 6.0 was used for antigen retrieval.



Western blot

Western blot analysis of SPT5 in Hela, A549, HL-60 lysates using SPT5 antibody.