

Anti-SUPT5H Antibody (R1C76)

Summary

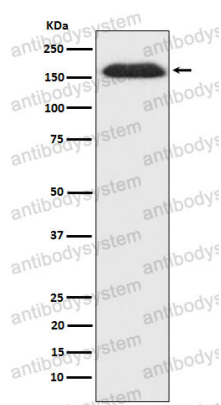
Catalog No.	RHA07602
Clone ID	R1C76
Host species	Rabbit
Tested applications	IF: 1:50-1:200, IHC: 1:100-1:200, WB: 1:1000-1:2000
Species reactivity	Human, Mouse, Rat
Form	Liquid
Storage buffer	0.01M PBS, pH 7.4, 0.05% BSA, 50% Glycerol, 0.05% Sodium azide.
Concentration	1 mg/ml
Purity	>95% by SDS-PAGE.
Clonality	Monoclonal
Isotype	IgG
Applications	IF, IHC, WB
Target	DSIF p160, Tat-cotransactivator 1 protein, DSIF large subunit, DRB sensitivity-inducing factor 160 kDa subunit, Transcription elongation factor SPT5, SPT5H, SUPT5H, DRB sensitivity-inducing factor large subunit, SPT5, Tat-CT1 protein, hSPT5
Purification	Protein A/G purified from cell culture supernatant.
Endotoxin level	Please contact with the lab for this information.
Accession	O00267

Stability and Storage

Use a manual defrost freezer and avoid repeated freeze thaw cycles. Store at 4 °C for frequent use. Store at -20 °C for twelve months from the date of receipt.

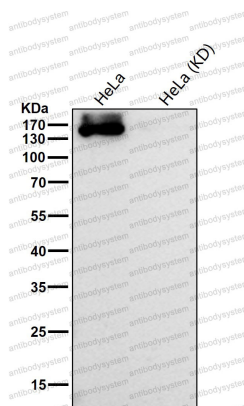
Note

For research use only.

Data Image

Western blot

Western blot analysis of SUPT5H expression in HepG2 cell lysate.



Western blot

All lanes use the Antibody at 1:1K dilution for 1 hour at room temperature.