

Anti-Human IgG Antibody (R1C56)

Summary

Catalog No.	RHJ92831
Clone ID	R1C56
Host species	Rabbit
Tested applications	IHC: 1:100-1:200, WB: 1:1000-1:2000
Species reactivity	Human
Form	Liquid
Storage buffer	PBS with 0.05% sodium azide, 0.05% BSA and 50% glycerol.
Concentration	1 mg/ml
Purity	>95% by SDS-PAGE.
Clonality	Monoclonal
Isotype	IgG
Applications	IHC, WB
Target	HDC, Heavy chain disease protein, Human immunoglobulin G, Ig gamma 1 chain C region, Ig gamma 2 chain C region, Ig gamma 3 chain C region, Ig gamma 4 chain C region, IgG heavy chain locus, IGHG1, IGHG2, IGHG3, IGHG4, Human IgG
Purification	Protein A/G purified from cell culture supernatant.
Endotoxin level	Please contact with the lab for this information.
Accession	P01857, P01859, P01860, P01861

Stability and Storage

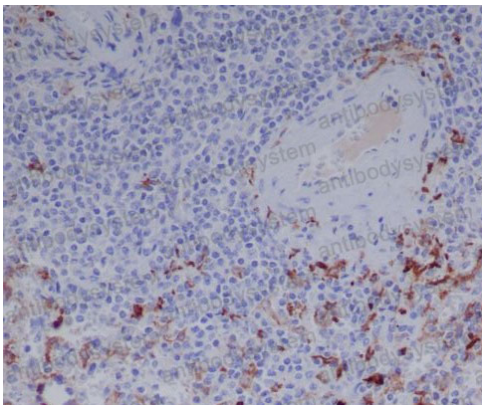
Use a manual defrost freezer and avoid repeated freeze-thaw cycles.

Store at +4 °C short term (1-2 weeks). Store at -20 °C 12 months. Store at -80 °C long term.

Note

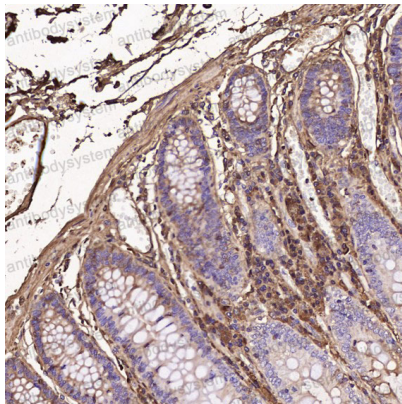
For research use only.

Data Image



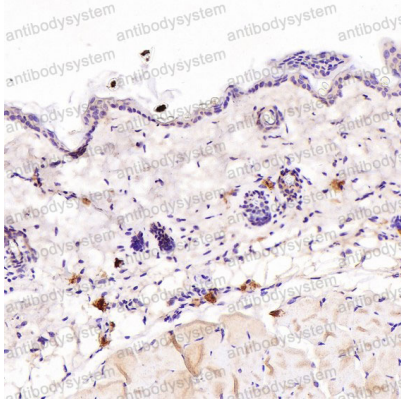
Immunohistochemical

Immunohistochemical analysis of paraffin-embedded human spleen, using Human IgG Antibody.



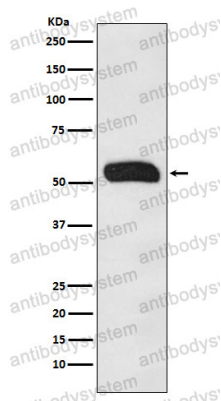
Immunohistochemical

Immunohistochemical analysis of paraffin-embedded Human colon, using the Antibody at 1:100 dilution.



Immunohistochemical analysis of paraffin-embedded Mouse skin, using the Antibody at 1:100 dilution.

Immunohistochemical



Western blot analysis of Human IgG expression in Human plasma lysate.

Western blot