

Anti-Phospho-FOXO3 (S253) Antibody (R1C48)

Summary

Catalog No.	RHA69802
Clone ID	R1C48
Host species	Rabbit
Tested applications	IHC: 1:100-1:200, WB: 1:1000-1:2000
Species reactivity	Human, Mouse, Rat
Form	Liquid
Storage buffer	0.01M PBS, pH 7.4, 0.05% BSA, 50% Glycerol, 0.05% Sodium azide.
Concentration	1 mg/ml
Purity	>95% by SDS-PAGE.
Clonality	Monoclonal
Isotype	IgG
Applications	IHC, WB
Target	AF6q21 protein, FKHR2, FKHL1, Forkhead box O3, forkhead box O3A, Forkhead box protein O3A, Forkhead in rhabdomyosarcoma-like 1, FOXO3A, p-FOXO3A (S253)
Purification	Protein A/G purified from cell culture supernatant.
Endotoxin level	Please contact with the lab for this information.
Accession	O43524

Recombinant Proteins & Antibodies

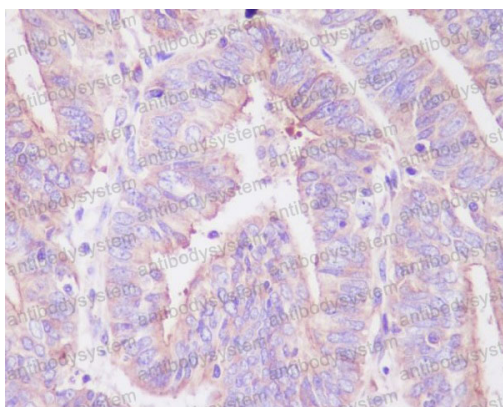
Stability and Storage

Use a manual defrost freezer and avoid repeated freeze-thaw cycles.

Store at +4 °C short term (1-2 weeks). Store at -20 °C 12 months. Store at -80 °C long term.

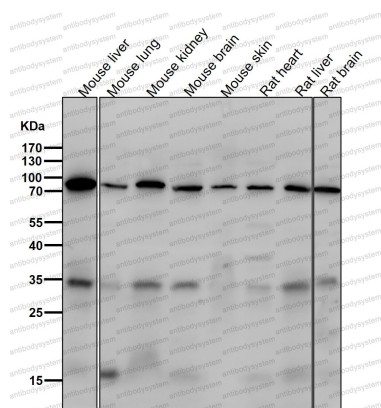
Note

For research use only.

Data Image

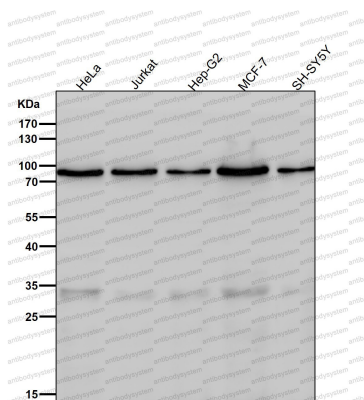
Immunohistochemical

Immunohistochemical analysis of paraffin-embedded human uterus cancer, using Phospho-FoxO3a (S253) Antibody.



Western blot

All lanes use the Antibody at 1:1K dilution for 1 hour at room temperature.



Western blot

All lanes use the Antibody at 1:1K dilution for 1 hour at room temperature.



Western blot

Western blot analysis of Phospho-FoxO3a (S253) expression in MCF-7 cell lysate treated with IGF.