

# Anti-AKT1/2/3 Antibody (R1C47)

## Summary

---

<b>Catalog No.</b>	RHD96504
<b>Clone ID</b>	R1C47
<b>Host species</b>	Rabbit
<b>Tested applications</b>	FCM: 1:20-1:100, IF: 1:50-1:200, IHC: 1:100-1:200, IP: 1:20-1:50, WB: 1:1000-1:2000
<b>Species reactivity</b>	Human, Mouse, Rat
<b>Form</b>	Liquid
<b>Storage buffer</b>	0.01M PBS, pH 7.4, 0.05% BSA, 50% Glycerol, 0.05% Sodium azide.
<b>Concentration</b>	1 mg/ml
<b>Purity</b>	>95% by SDS-PAGE.
<b>Clonality</b>	Monoclonal
<b>Isotype</b>	IgG
<b>Applications</b>	FCM, IF, IHC, IP, WB
<b>Target</b>	PKB, RAC, PRKBA, PKB-ALPHA, RAC-ALPHA, AKT1, AKT2, AKT3, Akt1/2/3, pan Akt, AKT
<b>Purification</b>	Protein A/G purified from cell culture supernatant.
<b>Endotoxin level</b>	Please contact with the lab for this information.
<b>Accession</b>	P31749, P31751, Q9Y243

**Stability and Storage**

Use a manual defrost freezer and avoid repeated freeze-thaw cycles.

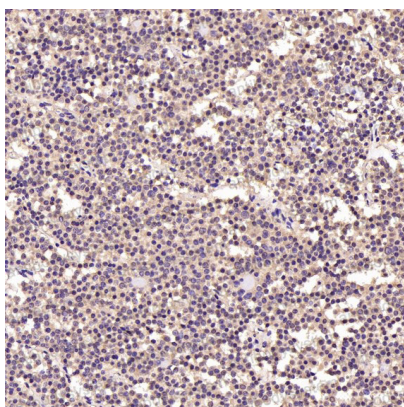
Store at +4 °C short term (1-2 weeks). Store at -20 °C 12 months. Store at -80 °C long term.

**Note**

For research use only.

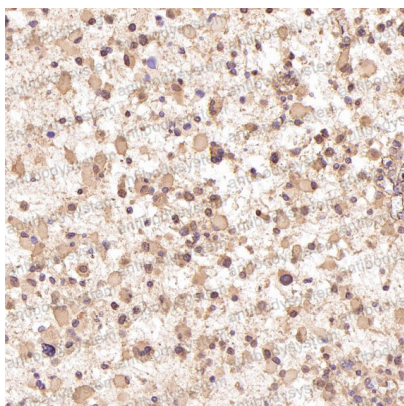
## Data Image

---



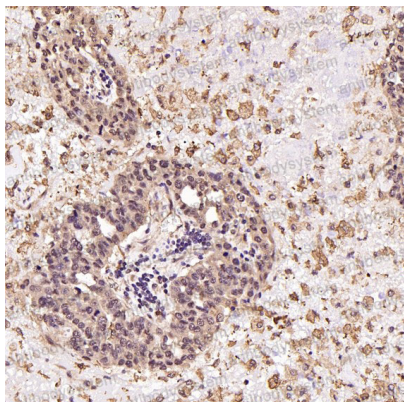
Immunohistochemical

Immunohistochemical analysis of paraffin-embedded Human pituitary tumor, using the Antibody at 1:250 dilution.



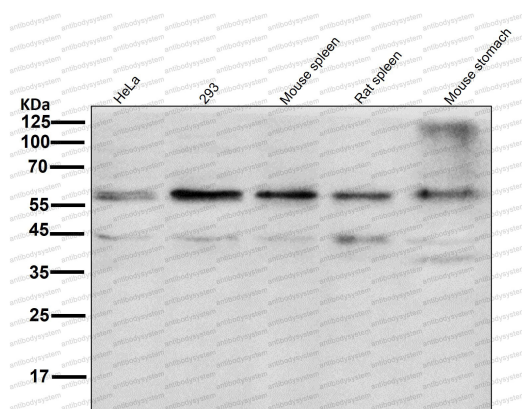
Immunohistochemical

Immunohistochemical analysis of paraffin-embedded Human astrocytoma, using the Antibody at 1:250 dilution.



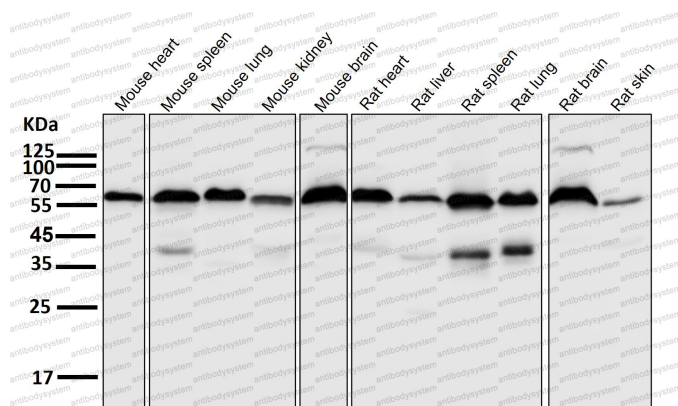
Immunohistochemical

Immunohistochemical analysis of paraffin-embedded Human ovarian cancer, using the Antibody at 1:1000 dilution.



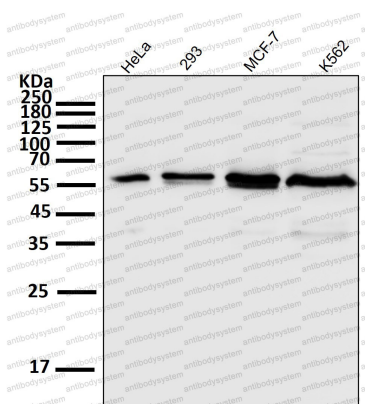
Western blot

All lanes use the Antibody at 1:2K dilution for 1 hour at room temperature.



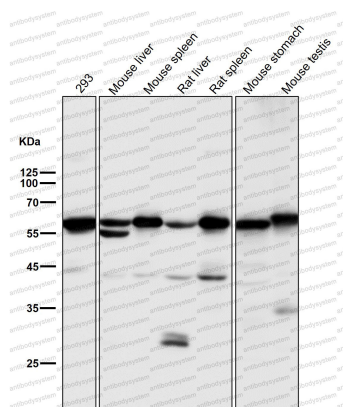
Western blot

All lanes use the Antibody at 1:2K dilution for 1 hour at room temperature.



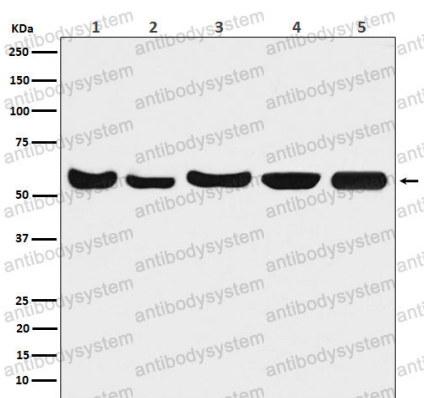
Western blot

All lanes use the Antibody at 1:2K dilution for 1 hour at room temperature.



Western blot

All lanes use the Antibody at 1:2K dilution for 1 hour at room temperature.



Western blot

Western blot analysis of Akt(pan)1/2/3 expression in (1) A549 cell lysate; (2) Mouse brain lysate; (3) Rat brain lysate; (4) Rat heart lysate; (5) Rat kidney lysate.