

Anti-PIM1 Antibody (R1C46)

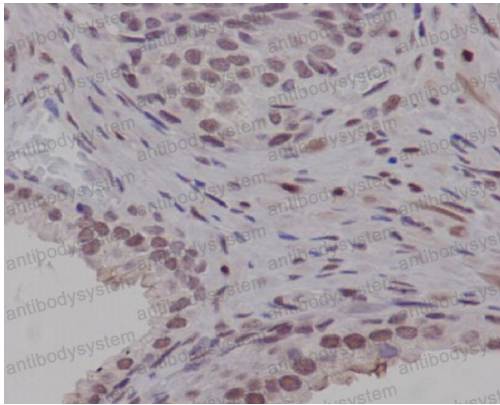
Summary

Catalog No.	RHC87901
Clone ID	R1C46
Host species	Rabbit
Tested applications	IF: 1:50-1:200, IHC: 1:100-1:200, WB: 1:1000-1:5000
Species reactivity	Human, Mouse
Form	Liquid
Storage buffer	0.01M PBS, pH 7.4, 0.05% BSA, 50% Glycerol, 0.05% Sodium azide.
Concentration	1 mg/ml
Purity	>95% by SDS-PAGE.
Clonality	Monoclonal
Isotype	IgG
Applications	IF, IHC, WB
Target	Oncogene PIM1, PIM, pim-1 kinase 44 kDa isoform, pim-1 oncogene, pim-1 oncogene (proviral integration site 1), PIM1, PIM1
Purification	Protein A/G purified from cell culture supernatant.
Endotoxin level	Please contact with the lab for this information.
Accession	P11309
Stability and Storage	Use a manual defrost freezer and avoid repeated freeze-thaw cycles. Store at +4 °C short term (1-2 weeks). Store at -20 °C 12 months. Store at -80 °C long term.

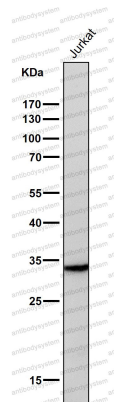
Note

For research use only.

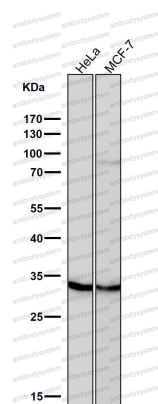
Data Image

**Immunohistochemical**

Immunohistochemical analysis of paraffin-embedded human prostate carcinoma, using PIM1 Antibody .

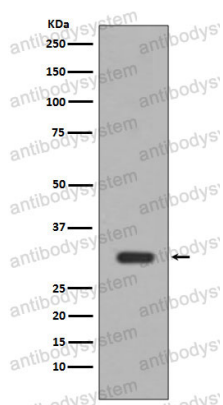
**Western blot**

All lanes use the Antibody at 1:3K dilution for 1 hour at room temperature.



Western blot

All lanes use the Antibody at 1:3K dilution for 1 hour at room temperature.



Western blot

Western blot analysis of PIM1 expression in Jurkat cell lysate.