

# Anti-MDK/Midkine Antibody (R1C45)

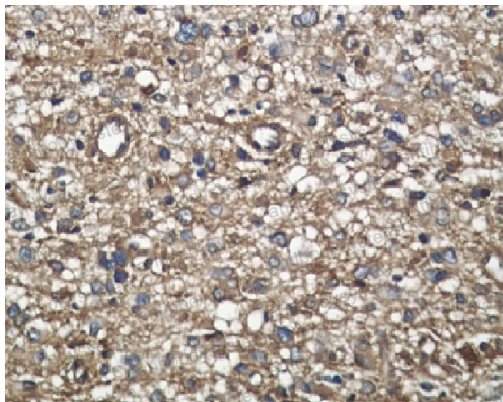
## Summary

---

|                              |   |
|------------------------------|---|
| <b>Catalog No.</b>           | RHD47402  |
| <b>Clone ID</b>              | R1C45   |
| <b>Host species</b>          | Rabbit  |
| <b>Tested applications</b>   | IF: 1:50-1:200, IHC: 1:100-1:200, IP: 1:20-1:50, WB: 1:1000-1:2000  |
| <b>Species reactivity</b>    | Human   |
| <b>Form</b>                  | Liquid  |
| <b>Storage buffer</b>        | 0.01M PBS, pH 7.4, 0.05% BSA, 50% Glycerol, 0.05% Sodium azide.   |
| <b>Concentration</b>         | 1 mg/ml   |
| <b>Purity</b>                | >95% by SDS-PAGE.   |
| <b>Clonality</b>             | Monoclonal  |
| <b>Isotype</b>               | IgG   |
| <b>Applications</b>          | IF, IHC, IP, WB   |
| <b>Target</b>                | MDK, FLJ27379, MK1, NEGF2, Midkine, NEGF2, ARAP, Midkine  |
| <b>Purification</b>          | Protein A/G purified from cell culture supernatant.   |
| <b>Endotoxin level</b>       | Please contact with the lab for this information.   |
| <b>Accession</b>             | P21741  |
| <b>Stability and Storage</b> | Use a manual defrost freezer and avoid repeated freeze-thaw cycles.<br>Store at +4 °C short term (1-2 weeks). Store at -20 °C 12 months. Store at -80 °C long term. |
| <b>Note</b>                  | For research use only.  |

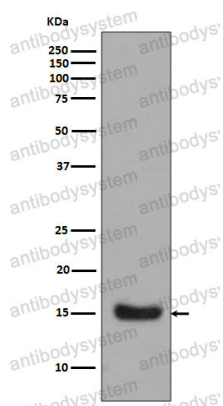
## Data Image

---



Immunohistochemical

Immunohistochemical analysis of paraffin-embedded human liver carcinoma, using Midkine Antibody .



Western blot

Western blot analysis of Midkine expression in Midkine Recombinant protein.