

Anti-PI3 Kinase p85 beta Antibody (R1C37)

Summary

Catalog No.	RHA12301
Clone ID	R1C37
Host species	Rabbit
Tested applications	FCM: 1:20-1:100, IF: 1:50-1:200, IHC: 1:100-1:200, IP: 1:20-1:50, WB: 1:1000-1:2000
Species reactivity	Human, Rat
Form	Liquid
Storage buffer	0.01M PBS, pH 7.4, 0.05% BSA, 50% Glycerol, 0.05% Sodium azide.
Concentration	1 mg/ml
Purity	>95% by SDS-PAGE.
Clonality	Monoclonal
Isotype	IgG
Applications	FCM, IF, IHC, IP, WB
Target	p85, p85 beta, P85B, Phosphatidylinositol 3 kinase, PI3 kinase p85 beta subunit, PI3K, PIK3R 2, PI3 kinase p85 beta
Purification	Protein A/G purified from cell culture supernatant.
Endotoxin level	Please contact with the lab for this information.
Accession	O00459

Recombinant Proteins & Antibodies

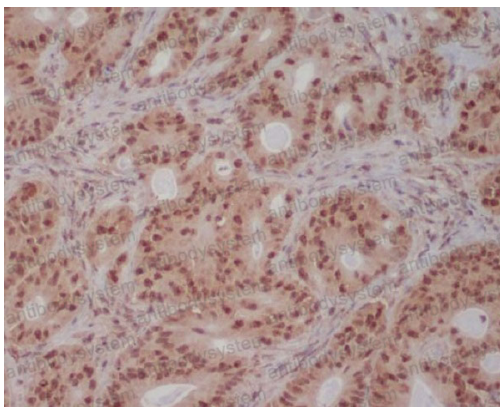
Stability and Storage

Use a manual defrost freezer and avoid repeated freeze-thaw cycles.

Store at +4 °C short term (1-2 weeks). Store at -20 °C 12 months. Store at -80 °C long term.

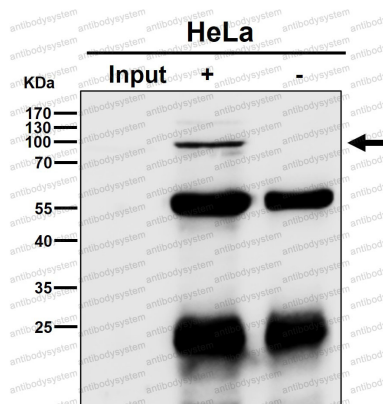
Note

For research use only.

Data Image

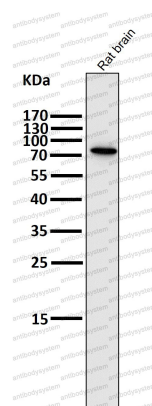
Immunohistochemical

Immunohistochemical analysis of paraffin-embedded human colon cancer, using PI 3 Kinase p85 beta Antibody.



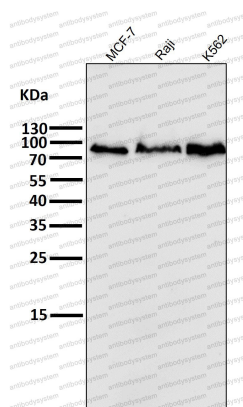
Immunoprecipitation

Immunoprecipitate (IP) analysis using the Antibody at 1:50 dilution. (wb at 1:3K dilution)



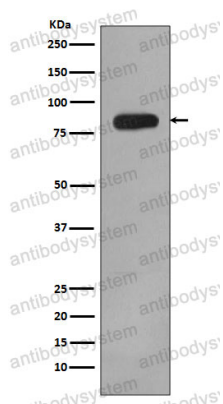
Western blot

All lanes use the Antibody at 1:2K dilution for 1 hour at room temperature.



Western blot

All lanes use the Antibody at 1:2K dilution for 1 hour at room temperature.



Western blot

Western blot analysis of PI 3 Kinase p85 beta expression in HeLa cell lysate.