

Anti-MAF Antibody (R1C29)

Summary

Catalog No.	RHB20602
Clone ID	R1C29
Host species	Rabbit
Tested applications	IHC: 1:100-1:200
Species reactivity	Human, Mouse, Rat
Form	Liquid
Storage buffer	0.01M PBS, pH 7.4, 0.05% BSA, 50% Glycerol, 0.05% Sodium azide.
Concentration	1 mg/ml
Purity	>95% by SDS-PAGE.
Clonality	Monoclonal
Isotype	IgG
Applications	IHC
Target	Avian musculoaponeurotic fibrosarcoma (MAF) protooncogene, c-MAF, c-maf proto-oncogene, cMaf, MAF, MGC71685, Proto-oncogene c-Maf, cMaf
Purification	Protein A/G purified from cell culture supernatant.
Endotoxin level	Please contact with the lab for this information.
Accession	O75444

Stability and Storage

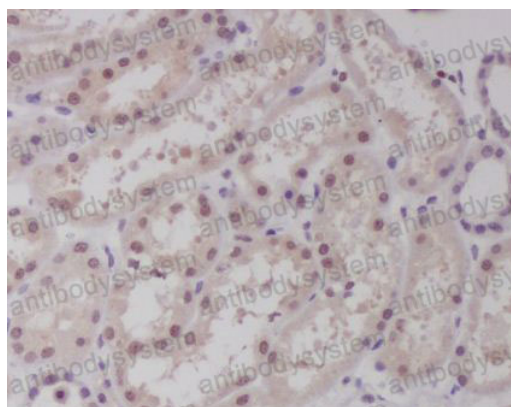
Use a manual defrost freezer and avoid repeated freeze-thaw cycles.

Store at +4 °C short term (1-2 weeks). Store at -20 °C 12 months. Store at -80 °C long term.

Note

For research use only.

Data Image



Immunohistochemical

Immunohistochemical analysis of paraffin-embedded human kidney, using c-Maf Antibody.