

Anti-PI3 Kinase p55 gamma Antibody (R1C24)

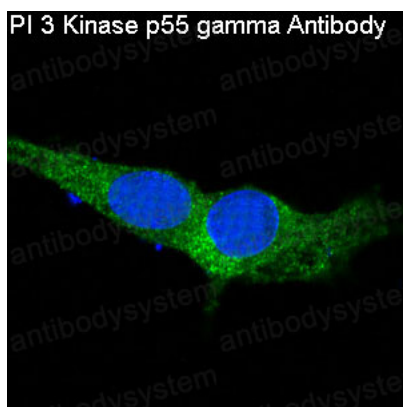
Summary

Catalog No.	RHN60301
Clone ID	R1C24
Host species	Rabbit
Tested applications	IF: 1:50-1:200, IHC: 1:100-1:200, WB: 1:1000-1:2000
Species reactivity	Human, Mouse, Rat
Form	Liquid
Storage buffer	0.01M PBS, pH 7.4, 0.05% BSA, 50% Glycerol, 0.05% Sodium azide.
Concentration	1 mg/ml
Purity	>95% by SDS-PAGE.
Clonality	Monoclonal
Isotype	IgG
Applications	IF, IHC, WB
Target	GRB1, P85A, PI3-kinase p85-alpha subunit, PI3K, PI3K p85-alpha, P55G, PI3-kinase p85-gamma subunit, PI3K p85-gamma, PI3 kinase p55 gamma
Purification	Protein A/G purified from cell culture supernatant.
Endotoxin level	Please contact with the lab for this information.
Accession	Q92569
Stability and Storage	Use a manual defrost freezer and avoid repeated freeze-thaw cycles. Store at +4 °C short term (1-2 weeks). Store at -20 °C 12 months. Store at -80 °C long term.

Note

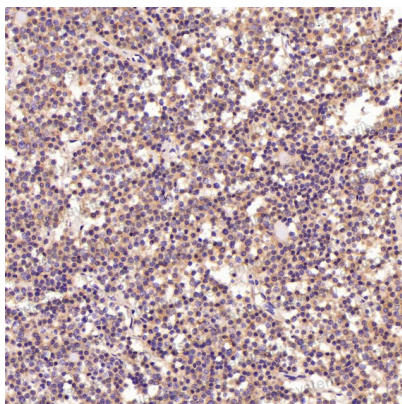
For research use only.

Data Image



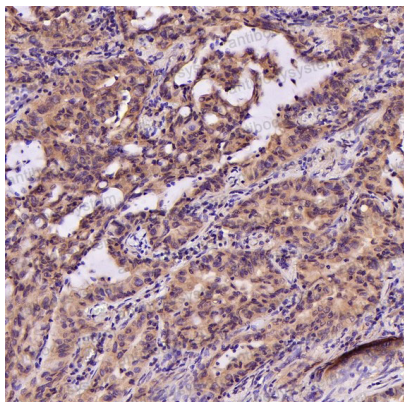
Immunofluorescence

Immunofluorescent analysis of C6 cells, using PI 3 Kinase p55 gamma Antibody .



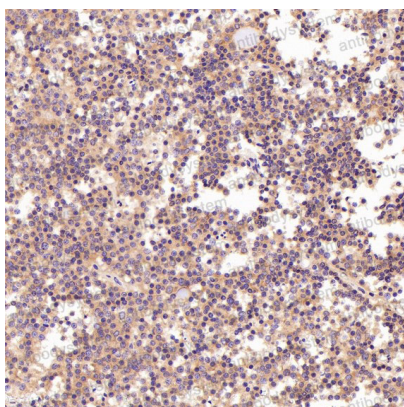
Immunohistochemical

Immunohistochemical analysis of paraffin-embedded Human pituitary tumor, using the Antibody at 1:200 dilution.



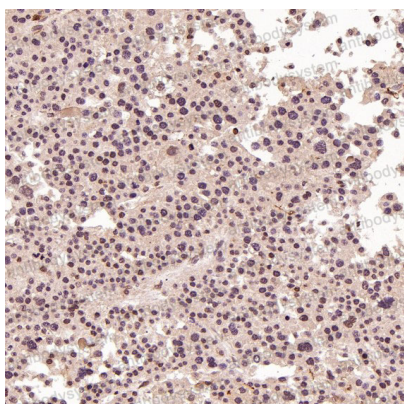
Immunohistochemical

Immunohistochemical analysis of paraffin-embedded Human lung adenocarcinoma, using the Antibody at 1:200 dilution.



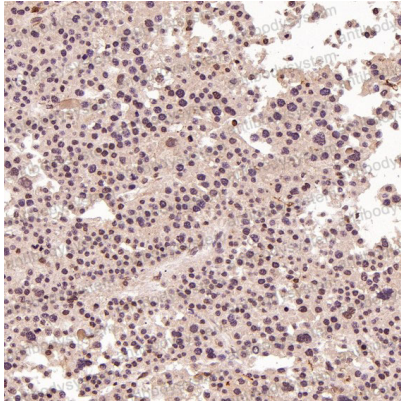
Immunohistochemical

Immunohistochemical analysis of paraffin-embedded Human pituitary tumor, using the Antibody at 1:200 dilution.



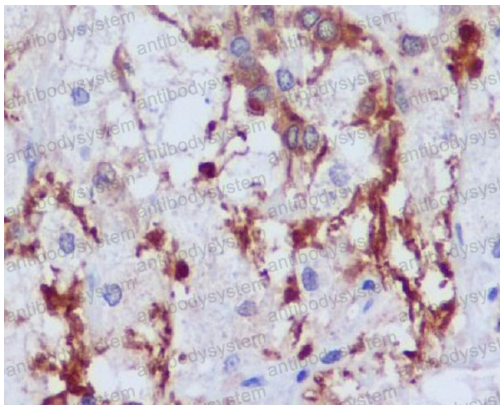
Immunohistochemical

Immunohistochemical analysis of paraffin-embedded Human liver cancer, using the Antibody at 1:100 dilution.



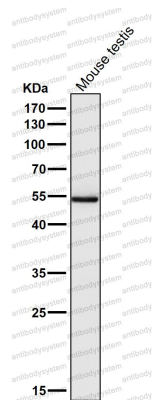
Immunohistochemical

Immunohistochemical analysis of paraffin-embedded Human liver cancer, using the Antibody at 1:100 dilution.



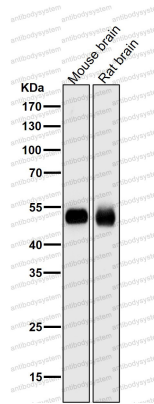
Immunohistochemical

Immunohistochemical analysis of paraffin-embedded human astrocytoma, using PI 3 Kinase p55 gamma Antibody.



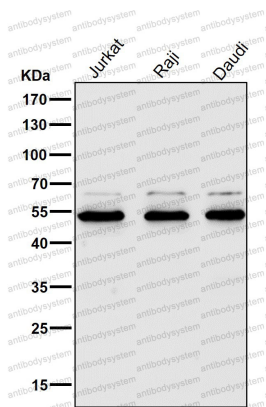
Western blot

All lanes use the Antibody at 1:2K dilution for 1 hour at room temperature.



Western blot

All lanes use the Antibody at 1:2K dilution for 1 hour at room temperature.



Western blot

All lanes use the Antibody at 1:2K dilution for 1 hour at room temperature.