

Anti-JNK1/2/3 Antibody (R1C15)

Summary

Catalog No.	RHE45801
Clone ID	R1C15
Host species	Rabbit
Tested applications	IF: 1:50-1:200, IP: 1:20-1:50, WB: 1:1000-1:2000
Species reactivity	Human, Mouse, Rat, Cow, Dog, Monkey, Zebrafish
Form	Liquid
Storage buffer	0.01M PBS, pH 7.4, 0.05% BSA, 50% Glycerol, 0.05% Sodium azide.
Concentration	1 mg/ml
Purity	>95% by SDS-PAGE.
Clonality	Monoclonal
Isotype	IgG
Applications	IF, IP, WB
Target	c-Jun N-terminal kinase 3, JNK1, JNK2, JNK3, JNK3 alpha protein kinase, JNK3A, MAP kinase 10, MAP kinase p49 3F12, MAPK 10, MAPK10, JNK1/2/3
Purification	Protein A/G purified from cell culture supernatant.
Endotoxin level	Please contact with the lab for this information.
Accession	P45983, P45984, P53779

Recombinant Proteins & Antibodies

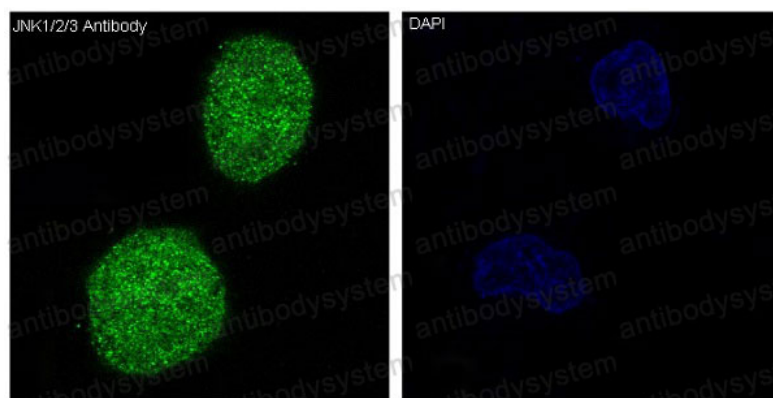
Stability and Storage

Use a manual defrost freezer and avoid repeated freeze-thaw cycles.

Store at +4 °C short term (1-2 weeks). Store at -20 °C 12 months. Store at -80 °C long term.

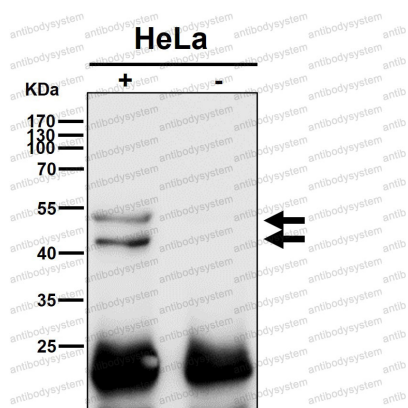
Note

For research use only.

Data Image

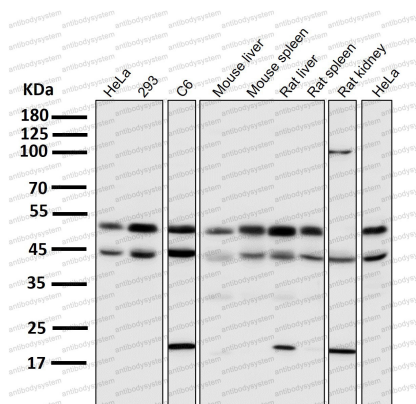
Immunofluorescent analysis of HeLa cells, using JNK1/2/3 Antibody.

Immunofluorescence



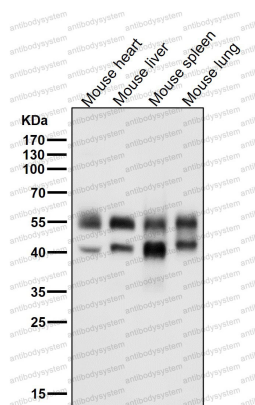
Immunoprecipitate (IP) analysis using the Antibody at 1:50 dilution. (wb at 1:3K dilution)

Immunoprecipitation



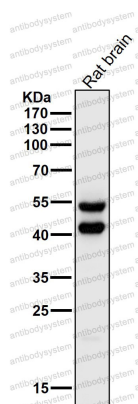
Western blot

All lanes use the Antibody at 1:2K dilution for 1 hour at room temperature.



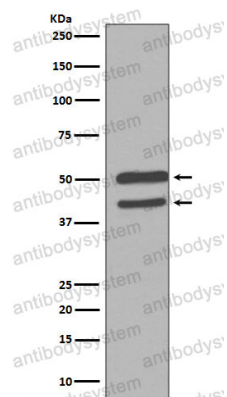
Western blot

All lanes use the Antibody at 1:2K dilution for 1 hour at room temperature.



Western blot

All lanes use the Antibody at 1:2K dilution for 1 hour at room temperature.



Western blot

Western blot analysis of JNK1/2/3 Antibody expression in HeLa cell lysate.