

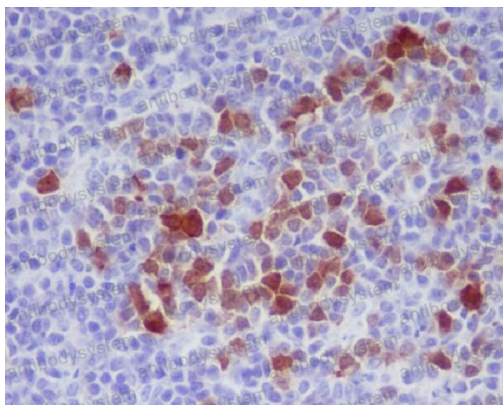
Anti-Phospho-CDK1/2 (T14) Antibody (R1C14)

Summary

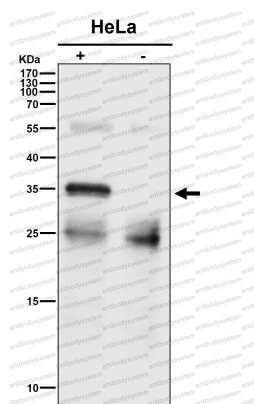
Catalog No.	RHC20201
Clone ID	R1C14
Host species	Rabbit
Tested applications	IHC: 1:100-1:200, IP: 1:20-1:50, WB: 1:1000-1:2000
Species reactivity	Human, Mouse, Rat
Form	Liquid
Storage buffer	0.01M PBS, pH 7.4, 0.05% BSA, 50% Glycerol, 0.05% Sodium azide.
Concentration	1 mg/ml
Purity	>95% by SDS-PAGE.
Clonality	Monoclonal
Isotype	IgG
Applications	IHC, IP, WB
Target	CDC28, CDC2A, CDK1, Cell division control protein 2 homolog, Cyclin-dependent kinase 1, MPF, kinase Cdc2, p34 protein kinase, p-CDK1/2 (T14)
Purification	Protein A/G purified from cell culture supernatant.
Endotoxin level	Please contact with the lab for this information.
Accession	P06493, P24941
Stability and Storage	Use a manual defrost freezer and avoid repeated freeze-thaw cycles. Store at +4 °C short term (1-2 weeks). Store at -20 °C 12 months. Store at -80 °C long term.

Note

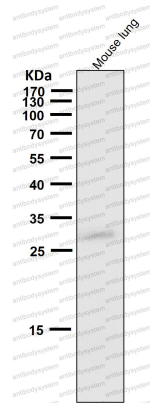
For research use only.

Data Image**Immunohistochemical**

Immunohistochemical analysis of paraffin-embedded rat spleen, using Phospho-Cdk1/2 (T14) Antibody.

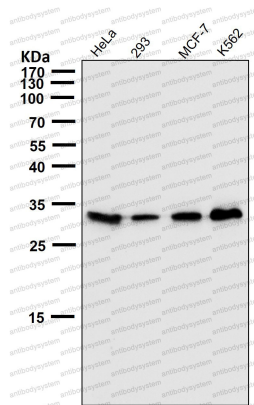
**Immunoprecipitation**

Immunoprecipitate (IP) analysis using the Antibody at 1:50 dilution. (wb at 1:3K dilution)



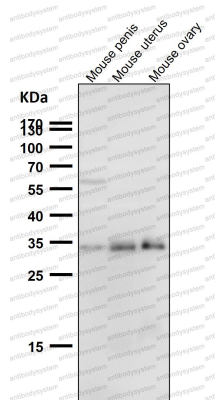
Western blot

All lanes use the Antibody at 1:1K dilution for 1 hour at room temperature.



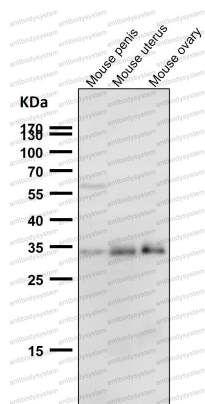
Western blot

All lanes use the Antibody at 1:1K dilution for 1 hour at room temperature.



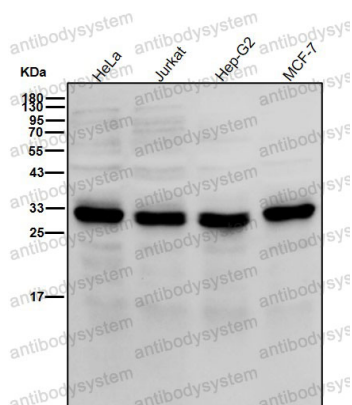
Western blot

All lanes use the Antibody at 1:1K dilution for 1 hour at room temperature.



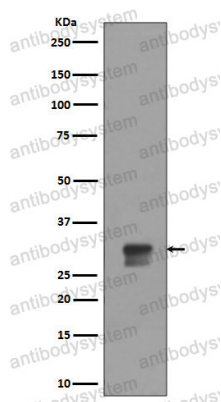
Western blot

All lanes use the Antibody at 1:1K dilution for 1 hour at room temperature.



Western blot

All lanes use the Antibody at 1:1K dilution for 1 hour at room temperature.



Western blot

Western blot analysis of Phospho-Cdk1/2 (T14) expression in HeLa cell lysate treated with hydroxyurea.