

# Anti-Histone H3 (monomethyl K18) Antibody (R1C11)

## Summary

---

<b>Catalog No.</b>	RHF62707
<b>Clone ID</b>	R1C11
<b>Host species</b>	Rabbit
<b>Tested applications</b>	IF: 1:50-1:200, IHC: 1:100-1:200, WB: 1:1000-1:2000
<b>Species reactivity</b>	Human, Mouse, Rat
<b>Form</b>	Liquid
<b>Storage buffer</b>	0.01M PBS, pH 7.4, 0.05% BSA, 50% Glycerol, 0.05% Sodium azide.
<b>Concentration</b>	1 mg/ml
<b>Purity</b>	>95% by SDS-PAGE.
<b>Clonality</b>	Monoclonal
<b>Isotype</b>	IgG
<b>Applications</b>	IF, IHC, WB
<b>Target</b>	H3 histone, HIST1H3A, Histone cluster 1, H3a, H3K18me1, MonoMethyl-Histone H3 (K19)
<b>Purification</b>	Protein A/G purified from cell culture supernatant.
<b>Endotoxin level</b>	Please contact with the lab for this information.
<b>Accession</b>	P68431

## Recombinant Proteins &amp; Antibodies

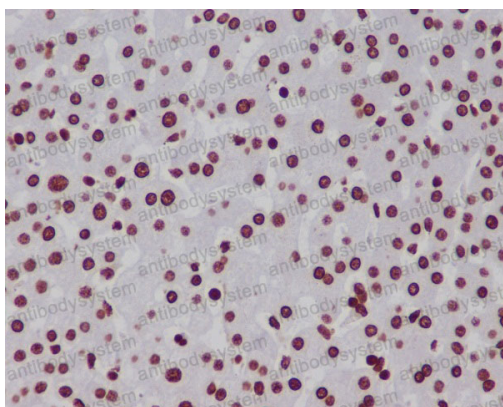
**Stability and Storage**

Use a manual defrost freezer and avoid repeated freeze-thaw cycles.

Store at +4 °C short term (1-2 weeks). Store at -20 °C 12 months. Store at -80 °C long term.

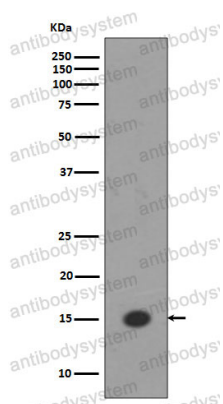
**Note**

For research use only.

**Data Image**

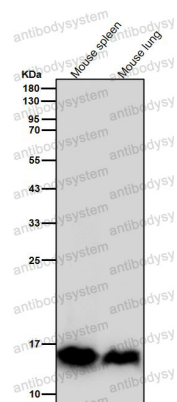
Immunohistochemical

Immunohistochemical analysis of paraffin-embedded human liver, using Histone H3 (mono methyl K18) Antibody.



Western blot

Western blot analysis of Histone H3 (mono methyl K18) expression in HeLa cell lysate.



Western blot

All lanes use the Antibody at 1:2k dilution for 1 hour at room temperature.