

Anti-Histone H2A Antibody (R1C08)

Summary

Catalog No.	RHC11302
Clone ID	R1C08
Host species	Rabbit
Tested applications	IF: 1:50-1:200, IHC: 1:100-1:200, WB: 1:1000-1:2000
Species reactivity	Human, Mouse, Rat
Form	Liquid
Storage buffer	0.01M PBS, pH 7.4, 0.05% BSA, 50% Glycerol, 0.05% Sodium azide.
Concentration	1 mg/ml
Purity	>95% by SDS-PAGE.
Clonality	Monoclonal
Isotype	IgG
Applications	IF, IHC, WB
Target	H2A.1, H2A.2, H2A/a, H2A/m, H2A/q, H2A1B, H2AFA, H2AFE, H2AFL, H2AFM, H2AFO, H2AFQ, HIST1H2AE, HIST1H2AJ, HIST2H2AA, HIST2H2AA3, HIST2H2AB, HIST2H2AC, Histone H2A
Purification	Protein A/G purified from cell culture supernatant.
Endotoxin level	Please contact with the lab for this information.
Accession	P04908

Stability and Storage

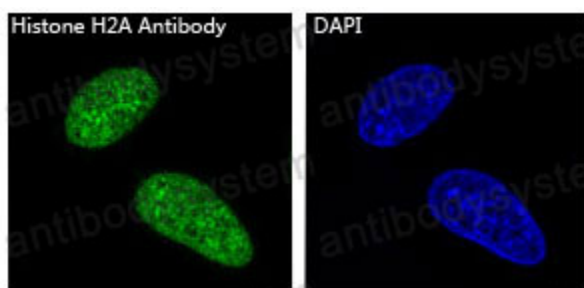
Use a manual defrost freezer and avoid repeated freeze-thaw cycles.

Store at +4 °C short term (1-2 weeks). Store at -20 °C 12 months. Store at -80 °C long term.

Note

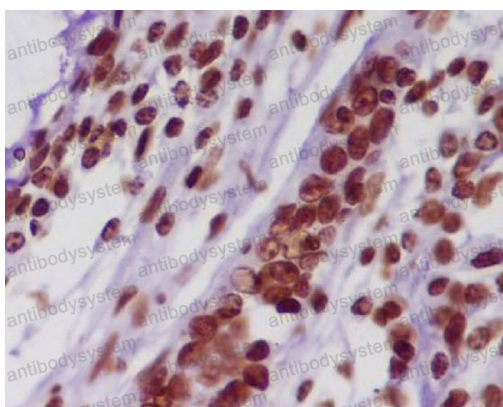
For research use only.

Data Image



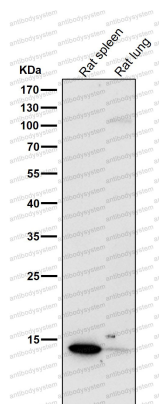
Immunofluorescence

Immunofluorescent analysis of Hela cells, using Histone H2A Antibody.



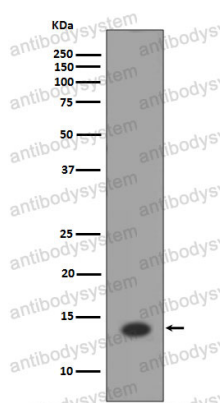
Immunohistochemical

Immunohistochemical analysis of paraffin-embedded human colon, using Histone H2A Antibody.



Western blot

All lanes use the Antibody at 1:2K dilution for 1 hour at room temperature.



Western blot

Western blot analysis of Histone H2A expression in HeLa cell lysate.