

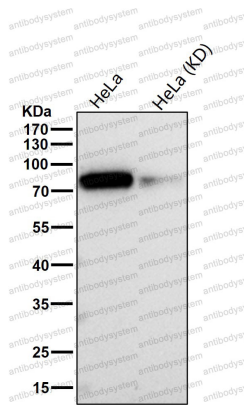
Anti-Phospho-GYS1 (S641) Antibody (R1B93)

Summary

Catalog No.	RHD01601
Clone ID	R1B93
Host species	Rabbit
Tested applications	IF: 1:50-1:200, IHC: 1:100-1:200, IP: 1:20-1:50, WB: 1:1000-1:2000
Species reactivity	Human, Mouse
Form	Liquid
Storage buffer	0.01M PBS, pH 7.4, 0.05% BSA, 50% Glycerol, 0.05% Sodium azide.
Concentration	1 mg/ml
Purity	>95% by SDS-PAGE.
Clonality	Monoclonal
Isotype	IgG
Applications	IF, IHC, IP, WB
Target	glycogen [starch] synthase, muscle, glycogen synthase, muscle, GYS, p-Glycogen synthase (S641)
Purification	Protein A/G purified from cell culture supernatant.
Endotoxin level	Please contact with the lab for this information.
Accession	P13807
Stability and Storage	Use a manual defrost freezer and avoid repeated freeze-thaw cycles. Store at +4 °C short term (1-2 weeks). Store at -20 °C 12 months. Store at -80 °C long term.

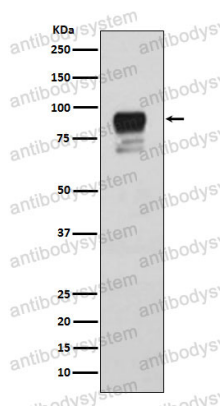
Note

For research use only.

Data Image

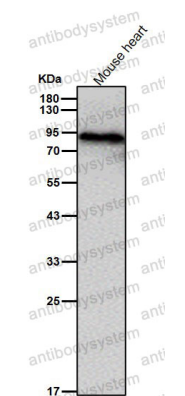
Western blot

All lanes use the Antibody at 1:1K dilution for 1 hour at room temperature.



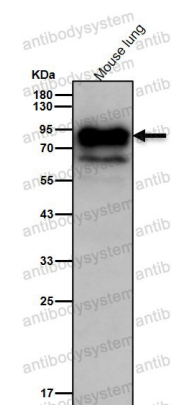
Western blot

Western blot analysis of Phospho-Glycogen synthase 1 (S641) expression in HeLa cell lysate.



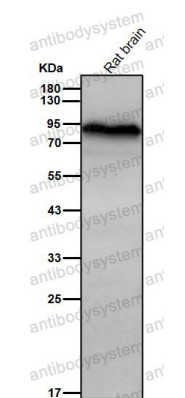
Western blot

All lanes use the Antibody at 1:2k dilution for 1 hour at room temperature.



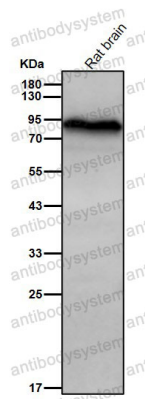
Western blot

All lanes use the Antibody at 1:2k dilution for 1 hour at room temperature.



Western blot

All lanes use the Antibody at 1:2k dilution for 1 hour at room temperature.



Western blot

All lanes use the Antibody at 1:2k dilution for 1 hour at room temperature.