

Anti-K27-linkage Specific Ubiquitin Antibody (R1B88)

Summary

| | |
|----------------------------|---|
| Catalog No. | RHC59201 |
| Clone ID | R1B88 |
| Host species | Rabbit |
| Tested applications | IF: 1:50-1:200, IHC: 1:100-1:200, WB: 1:1000-1:2000 |
| Species reactivity | Human, Mouse, Rat |
| Form | Liquid |
| Storage buffer | 0.01M PBS, pH 7.4, 0.05% BSA, 50% Glycerol, 0.05% Sodium azide. |
| Concentration | 1 mg/ml |
| Purity | >95% by SDS-PAGE. |
| Clonality | Monoclonal |
| Isotype | IgG |
| Applications | IF, IHC, WB |
| Target | FLJ25987, MGC8385, ubiquitin B, Ubiquitin, UBCEP1, UBCEP2, RPS27A, K27-linkage specific ubiquitin |
| Purification | Protein A/G purified from cell culture supernatant. |
| Endotoxin level | Please contact with the lab for this information. |
| Accession | P0CG47, P0CG48 |

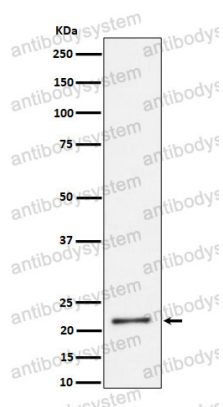
Stability and Storage

Use a manual defrost freezer and avoid repeated freeze-thaw cycles.

Store at +4 °C short term (1-2 weeks). Store at -20 °C 12 months. Store at -80 °C long term.

Note

For research use only.

Data Image

Western blot

Western blot analysis of K27-linkage Specific Ubiquitin expression in HeLa cell lysate.