

# Anti-VDAC1 Antibody (R1B62)

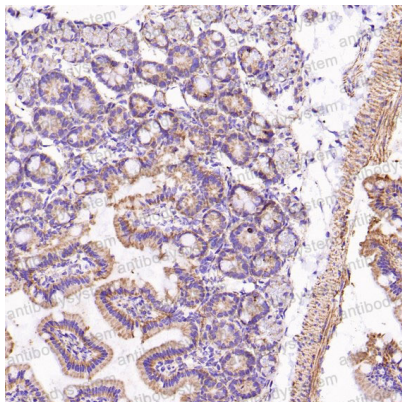
## Summary

---

<b>Catalog No.</b>	RHD47804
<b>Clone ID</b>	R1B62
<b>Host species</b>	Rabbit
<b>Tested applications</b>	IF: 1:50-1:200, IHC: 1:100-1:200, WB: 1:1000-1:2000
<b>Species reactivity</b>	Human, Mouse, Rat
<b>Form</b>	Liquid
<b>Storage buffer</b>	0.01M PBS, pH 7.4, 0.05% BSA, 50% Glycerol, 0.05% Sodium azide.
<b>Concentration</b>	1 mg/ml
<b>Purity</b>	>95% by SDS-PAGE.
<b>Clonality</b>	Monoclonal
<b>Isotype</b>	IgG
<b>Applications</b>	IF, IHC, WB
<b>Target</b>	VDAC1, MGC111064, PORIN, PORIN-31-HL, VDAC1
<b>Purification</b>	Protein A/G purified from cell culture supernatant.
<b>Endotoxin level</b>	Please contact with the lab for this information.
<b>Accession</b>	P21796
<b>Stability and Storage</b>	Use a manual defrost freezer and avoid repeated freeze-thaw cycles. Store at +4 °C short term (1-2 weeks). Store at -20 °C 12 months. Store at -80 °C long term.
<b>Note</b>	For research use only.

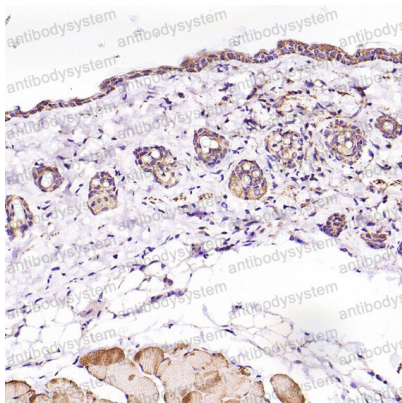
## Data Image

---



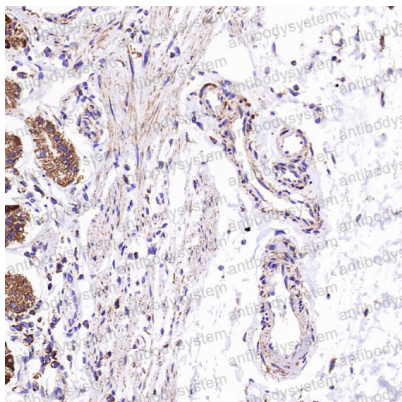
**Immunohistochemical**

Immunohistochemical analysis of paraffin-embedded Mouse intestine, using the Antibody at 1:200 dilution.



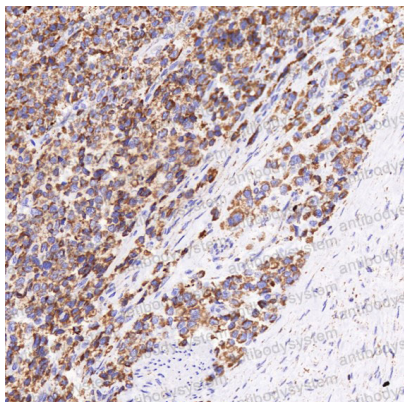
**Immunohistochemical**

Immunohistochemical analysis of paraffin-embedded Mouse skin, using the Antibody at 1:200 dilution.



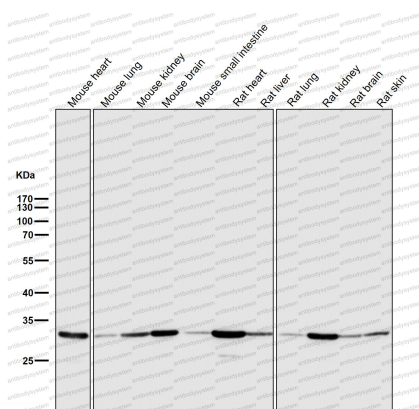
**Immunohistochemical**

Immunohistochemical analysis of paraffin-embedded Human stomach, using the Antibody at 1:200 dilution.



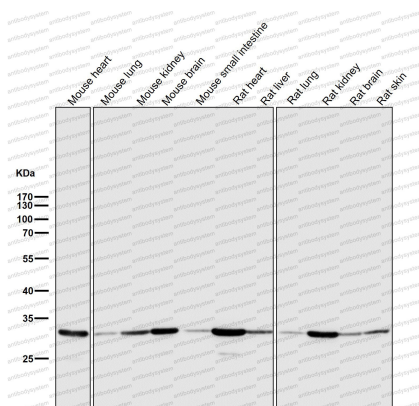
Immunohistochemical

Immunohistochemical analysis of paraffin-embedded Human prostate cancer, using the Antibody at 1:200 dilution.



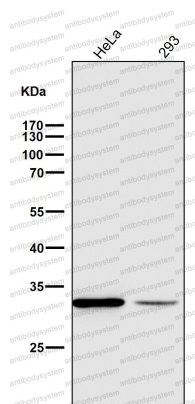
Western blot

All lanes use the Antibody at 1:2K dilution for 1 hour at room temperature.



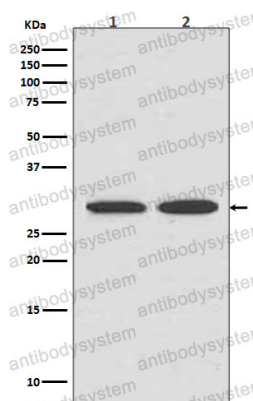
Western blot

All lanes use the Antibody at 1:2K dilution for 1 hour at room temperature.



Western blot

All lanes use the Antibody at 1:2K dilution for 1 hour at room temperature.



Western blot

Western blot analysis of VDAC1 expression in (1) HepG2 cell lysate; (2) Jurkat cell lysate.