

# Anti-Renilla-type luciferase Antibody (R1B58)

## Summary

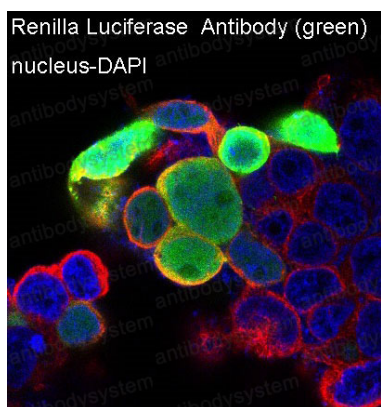
---

|                              |   |
|------------------------------|---|
| <b>Catalog No.</b>           | RXX52502  |
| <b>Clone ID</b>              | R1B58   |
| <b>Host species</b>          | Rabbit  |
| <b>Tested applications</b>   | IF: 1:50-1:200, WB: 1:1000-1:2000   |
| <b>Species reactivity</b>    | Renilla reniformis  |
| <b>Form</b>                  | Liquid  |
| <b>Storage buffer</b>        | 0.01M PBS, pH 7.4, 0.05% BSA, 50% Glycerol, 0.05% Sodium azide.   |
| <b>Concentration</b>         | 1 mg/ml   |
| <b>Purity</b>                | >95% by SDS-PAGE.   |
| <b>Clonality</b>             | Monoclonal  |
| <b>Isotype</b>               | IgG   |
| <b>Applications</b>          | IF, WB  |
| <b>Target</b>                | Renilla Luciferase, Renilla reniformis, Recombinant fragment, Renilla luciferase  |
| <b>Purification</b>          | Protein A/G purified from cell culture supernatant.   |
| <b>Endotoxin level</b>       | Please contact with the lab for this information.   |
| <b>Accession</b>             | P27652  |
| <b>Stability and Storage</b> | Use a manual defrost freezer and avoid repeated freeze-thaw cycles.<br>Store at +4 °C short term (1-2 weeks). Store at -20 °C 12 months. Store at -80 °C long term. |

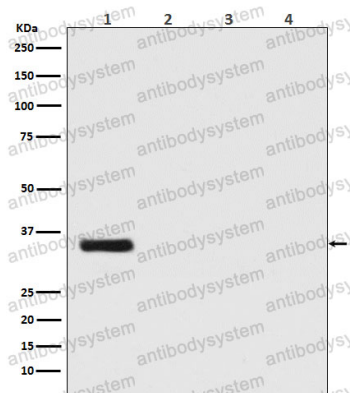
**Note**

For research use only.

## Data Image



Immunofluorescence



Western blot

Immunofluorescent analysis of 293 cells transfected with Renilla Luciferase, using Renilla Luciferase Antibody .

Western blot analysis of Renilla Luciferase expression in (1) Renilla Luciferase transfected 293 cell lysate; (2) HeLa cell lysate; (3) NIH/3T3 cell lysate; (4) C6 cell lysate.