

Anti-CD184/CXCR4 Antibody (R1B46)

Summary

Catalog No.	RHF39902
Clone ID	R1B46
Host species	Rabbit
Tested applications	IF: 1:50-1:200, IHC: 1:100-1:200, WB: 1:500-1:1000
Species reactivity	Human, Mouse
Form	Liquid
Storage buffer	0.01M PBS, pH 7.4, 0.05% BSA, 50% Glycerol, 0.05% Sodium azide.
Concentration	1 mg/ml
Purity	>95% by SDS-PAGE.
Clonality	Monoclonal
Isotype	IgG
Applications	IF, IHC, WB
Target	CD184, CXCR4, C-X-C chemokine receptor type 4, FB22, Fusin, HM89, LCR1, LESTR, NPYRL, SDF-1 receptor, Stromal cell- derived factor 1 receptor, CXCR4
Purification	Protein A/G purified from cell culture supernatant.
Endotoxin level	Please contact with the lab for this information.
Accession	P61073

Stability and Storage

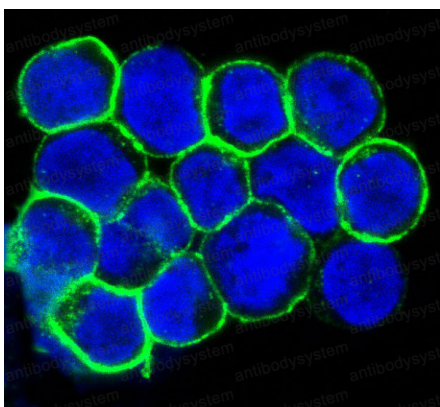
Use a manual defrost freezer and avoid repeated freeze-thaw cycles.

Store at +4 °C short term (1-2 weeks). Store at -20 °C 12 months. Store at -80 °C long term.

Note

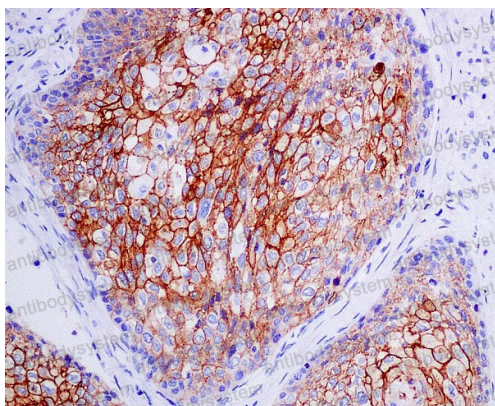
For research use only.

Data Image



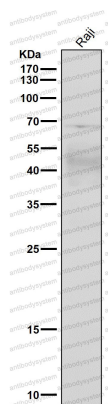
Immunofluorescence

Immunofluorescent analysis of Jurkat cells, using CXCR4 Antibody .



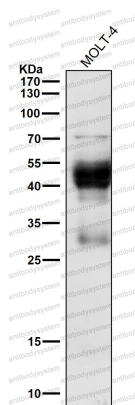
Immunohistochemical

Immunohistochemical analysis of paraffin-embedded human cervical carcinoma, using CXCR4 Antibody.



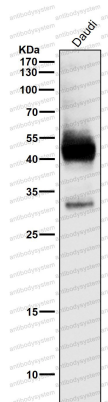
Western blot

All lanes use the Antibody at 1:500 dilution for 1 hour at room temperature.



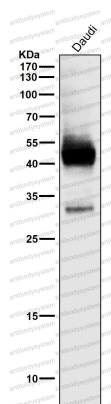
Western blot

All lanes use the Antibody at 1:500 dilution for 1 hour at room temperature.



Western blot

All lanes use the Antibody at 1:500 dilution for 1 hour at room temperature.



Western blot

All lanes use the Antibody at 1:500 dilution for 1 hour at room temperature.