

Anti-S100A8/MRP8 Antibody (R1B35)

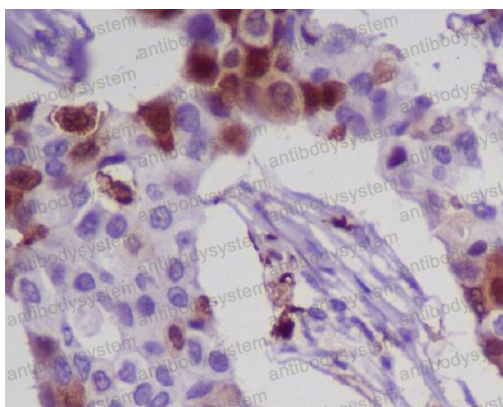
Summary

Catalog No.	RHC13302
Clone ID	R1B35
Host species	Rabbit
Tested applications	IHC: 1:100-1:200, IP: 1:20-1:50, WB: 1:1000-1:2000
Species reactivity	Human, Mouse
Form	Liquid
Storage buffer	0.01M PBS, pH 7.4, 0.05% BSA, 50% Glycerol, 0.05% Sodium azide.
Concentration	1 mg/ml
Purity	>95% by SDS-PAGE.
Clonality	Monoclonal
Isotype	IgG
Applications	IHC, IP, WB
Target	60B8AG, CAGA, CFAG, CGLA, CP-10, L1Ag, MA387, MIF, MRP8, NIF, P8, S100A8
Purification	Protein A/G purified from cell culture supernatant.
Endotoxin level	Please contact with the lab for this information.
Accession	P05109
Stability and Storage	Use a manual defrost freezer and avoid repeated freeze-thaw cycles. Store at +4 °C short term (1-2 weeks). Store at -20 °C 12 months. Store at -80 °C long term.

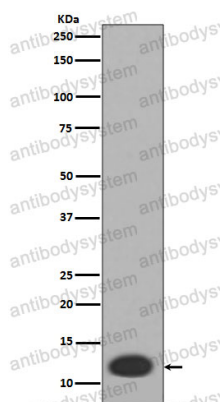
Note

For research use only.

Data Image

**Immunohistochemical**

Immunohistochemical analysis of paraffin-embedded human breast cancer, using MRP8 Antibody.

**Western blot**

Western blot analysis of MRP8 expression in HL-60 cell lysate.