

Anti-PIK3C3 Antibody (R1B29)

Summary

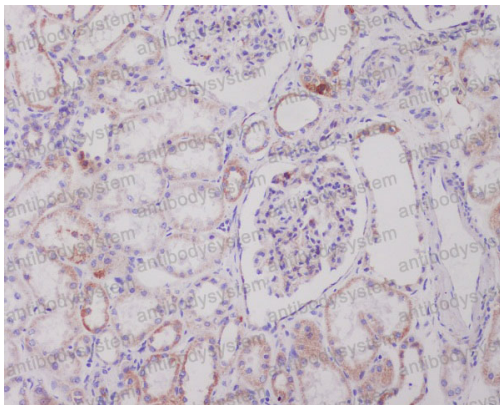
Catalog No.	RHJ24501
Clone ID	R1B29
Host species	Rabbit
Tested applications	IHC: 1:100-1:200, WB: 1:1000-1:2000
Species reactivity	Human, Mouse, Rat
Form	Liquid
Storage buffer	0.01M PBS, pH 7.4, 0.05% BSA, 50% Glycerol, 0.05% Sodium azide.
Concentration	1 mg/ml
Purity	>95% by SDS-PAGE.
Clonality	Monoclonal
Isotype	IgG
Applications	IHC, WB
Target	PI3-kinase type 3, PI3K type 3, PI3 kinase type 3, Phosphatidylinositol 3-kinase p100 subunit, Phosphoinositide-3-kinase class 3, hVps34, PIK3C3, Vps 34, Vps34, PI3 kinase p100
Purification	Protein A/G purified from cell culture supernatant.
Endotoxin level	Please contact with the lab for this information.
Accession	Q8NEB9

Recombinant Proteins & Antibodies

Stability and Storage Use a manual defrost freezer and avoid repeated freeze-thaw cycles.
Store at +4 °C short term (1-2 weeks). Store at -20 °C 12 months. Store at -80 °C long term.

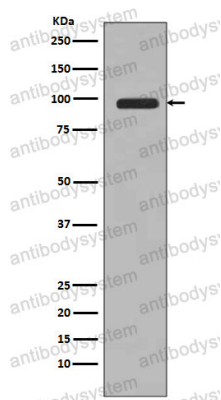
Note For research use only.

Data Image



Immunohistochemical

Immunohistochemical analysis of paraffin-embedded human kidney, using PI 3 Kinase Class 3 Antibody.



Western blot

Western blot analysis of PI 3 Kinase Class 3 expression in 293T cell lysate.