

# Anti-TGFBI Antibody (R1B27)

## Summary

---

<b>Catalog No.</b>	RHH13402
<b>Clone ID</b>	R1B27
<b>Host species</b>	Rabbit
<b>Tested applications</b>	IHC: 1:100-1:200, WB: 1:1000-1:2000
<b>Species reactivity</b>	Human, Mouse, Rat
<b>Form</b>	Liquid
<b>Storage buffer</b>	0.01M PBS, pH 7.4, 0.05% BSA, 50% Glycerol, 0.05% Sodium azide.
<b>Concentration</b>	1 mg/ml
<b>Purity</b>	>95% by SDS-PAGE.
<b>Clonality</b>	Monoclonal
<b>Isotype</b>	IgG
<b>Applications</b>	IHC, WB
<b>Target</b>	Beta ig, Beta ig h3, Beta ig-h3, BGH3_HUMAN, Big h3, BIGH3, CDB1, CDG2, CDGG1, CSD, CSD1, CSD2, CSD3, EBMD, Kerato epithelin, Kerato-epithelin, LCD1, TGFBI
<b>Purification</b>	Protein A/G purified from cell culture supernatant.
<b>Endotoxin level</b>	Please contact with the lab for this information.
<b>Accession</b>	Q15582

## Recombinant Proteins &amp; Antibodies

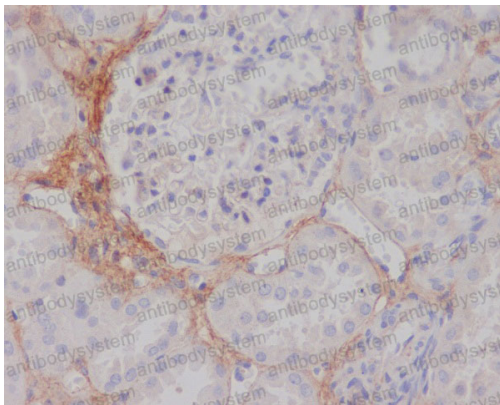
**Stability and Storage**

Use a manual defrost freezer and avoid repeated freeze-thaw cycles.

Store at +4 °C short term (1-2 weeks). Store at -20 °C 12 months. Store at -80 °C long term.

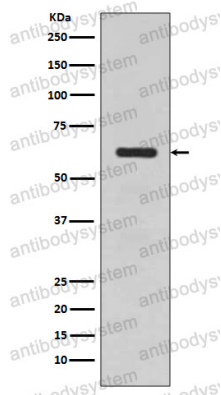
**Note**

For research use only.

**Data Image**

Immunohistochemical

Immunohistochemical analysis of paraffin-embedded human kidney, using TGFBI Antibody.



Western blot

Western blot analysis of TGFBI expression in human fetal kidney lysate.