

Anti-KMT4/Dot1L Antibody (R1B26)

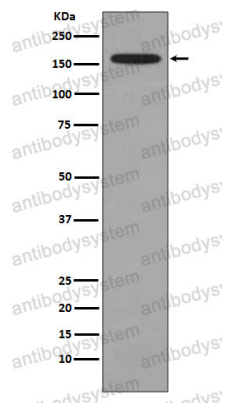
Summary

Catalog No.	RHK19102
Clone ID	R1B26
Host species	Rabbit
Tested applications	WB: 1:1000-1:2000
Species reactivity	Human, Mouse
Form	Liquid
Storage buffer	0.01M PBS, pH 7.4, 0.05% BSA, 50% Glycerol, 0.05% Sodium azide.
Concentration	1 mg/ml
Purity	>95% by SDS-PAGE.
Clonality	Monoclonal
Isotype	IgG
Applications	WB
Target	DOT 1, DOT1L, KMT4, Histone methyltransferase DOT1L, H3 lysine-79 specific,, KMT4
Purification	Protein A/G purified from cell culture supernatant.
Endotoxin level	Please contact with the lab for this information.
Accession	Q8TEK3
Stability and Storage	Use a manual defrost freezer and avoid repeated freeze-thaw cycles. Store at +4 °C short term (1-2 weeks). Store at -20 °C 12 months. Store at -80 °C long term.

Note

For research use only.

Data Image



Western blot

Western blot analysis of KMT4/Dot1L expression in RAW264.7 cell lysate.