

# Anti-WNT2 Antibody (R1B20)

## Summary

---

<b>Catalog No.</b>	RHC41703
<b>Clone ID</b>	R1B20
<b>Host species</b>	Rabbit
<b>Tested applications</b>	WB: 1:1000-1:2000
<b>Species reactivity</b>	Human, Mouse, Rat
<b>Form</b>	Liquid
<b>Storage buffer</b>	0.01M PBS, pH 7.4, 0.05% BSA, 50% Glycerol, 0.05% Sodium azide.
<b>Concentration</b>	1 mg/ml
<b>Purity</b>	>95% by SDS-PAGE.
<b>Clonality</b>	Monoclonal
<b>Isotype</b>	IgG
<b>Applications</b>	WB
<b>Target</b>	Int 1 related protein, INT1L 1, INT1L1, IRP, IRP protein, ONCOGENE INT1 LIKE 1, Protein Wnt-2, Secreted growth factor, Wingless type MMTV integration site family member 2, WNT2, Wnt2
<b>Purification</b>	Protein A/G purified from cell culture supernatant.
<b>Endotoxin level</b>	Please contact with the lab for this information.
<b>Accession</b>	P09544

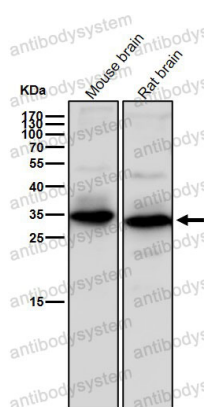
**Stability and Storage**

Use a manual defrost freezer and avoid repeated freeze-thaw cycles.

Store at +4 °C short term (1-2 weeks). Store at -20 °C 12 months. Store at -80 °C long term.

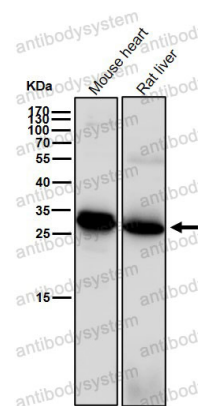
**Note**

For research use only.

**Data Image**

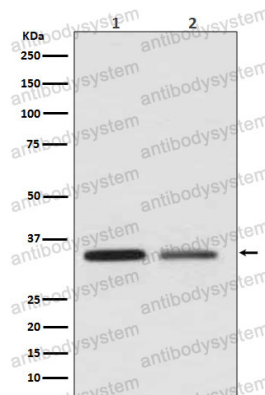
Western blot

All lanes use the Antibody at 1:1K dilution for 1 hour at room temperature.



Western blot

All lanes use the Antibody at 1:1K dilution for 1 hour at room temperature.



Western blot

Western blot analysis of WNT2 expression in (1) Jurkat cell lysate; (2) SKBR-3 cell lysate.