

Anti-APAF1 Antibody (R1B07)

Summary

Catalog No.	RHA27801
Clone ID	R1B07
Host species	Rabbit
Tested applications	IF: 1:50-1:200, IHC: 1:100-1:200, WB: 1:1000-1:2000
Species reactivity	Human, Mouse
Form	Liquid
Storage buffer	0.01M PBS, pH 7.4, 0.05% BSA, 50% Glycerol, 0.05% Sodium azide.
Concentration	1 mg/ml
Purity	>95% by SDS-PAGE.
Clonality	Monoclonal
Isotype	IgG
Applications	IF, IHC, WB
Target	APAF, APAF-1, APAF1, apoptotic peptidase activating factor 1, apoptotic protease activating factor 1, Apoptotic protease-activating factor 1, CED4, DKFZp781B1145, KIAA0413, APAF 1
Purification	Protein A/G purified from cell culture supernatant.
Endotoxin level	Please contact with the lab for this information.
Accession	O14727

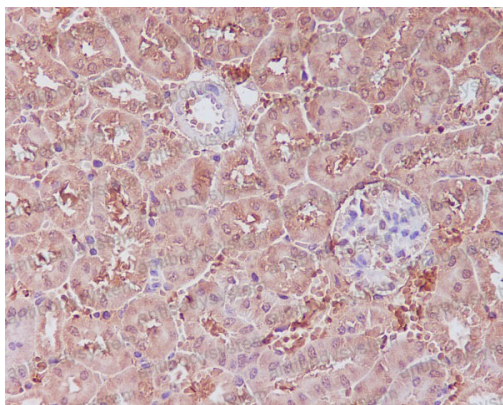
Stability and Storage

Use a manual defrost freezer and avoid repeated freeze-thaw cycles.

Store at +4 °C short term (1-2 weeks). Store at -20 °C 12 months. Store at -80 °C long term.

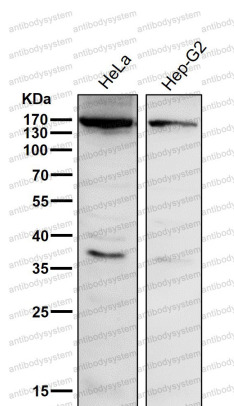
Note

For research use only.

Data Image

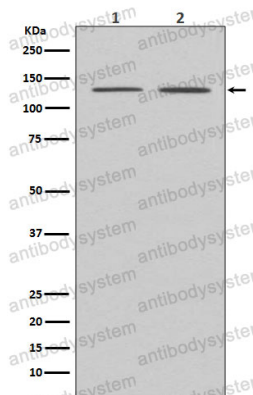
Immunohistochemical

Immunohistochemical analysis of paraffin-embedded mouse kidney, using APAF1 Antibody .



Western blot

All lanes use the Antibody at 1:1K dilution for 1 hour at room temperature.



Western blot

Western blot analysis of APAF1 expression in (1) HeLa cell lysate; (2) MCF-7 cell lysate.