

Anti-HAPLN1 Antibody (R1B05)

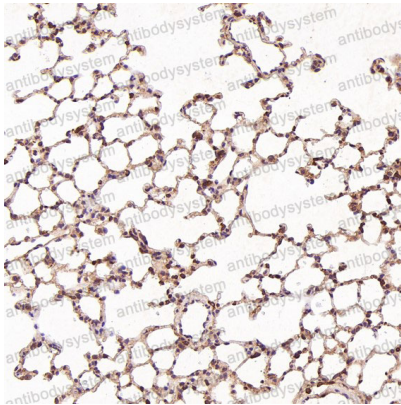
Summary

Catalog No.	RHC84501
Clone ID	R1B05
Host species	Rabbit
Tested applications	IF: 1:50-1:200, IHC: 1:100-1:200, WB: 1:1000-1:2000
Species reactivity	Human, Mouse, Rat
Form	Liquid
Storage buffer	0.01M PBS, pH 7.4, 0.05% BSA, 50% Glycerol, 0.05% Sodium azide.
Concentration	1 mg/ml
Purity	>95% by SDS-PAGE.
Clonality	Monoclonal
Isotype	IgG
Applications	IF, IHC, WB
Target	Hyaluronan and proteoglycan link protein 1, Cartilage-linking protein 1, Cartilage-link protein, Proteoglycan link protein, HAPLN1, CRTL1, HAPLN1
Purification	Protein A/G purified from cell culture supernatant.
Endotoxin level	Please contact with the lab for this information.
Accession	P10915
Stability and Storage	Use a manual defrost freezer and avoid repeated freeze-thaw cycles. Store at +4 °C short term (1-2 weeks). Store at -20 °C 12 months. Store at -80 °C long term.

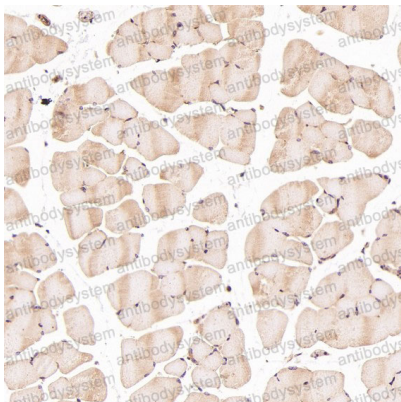
Note

For research use only.

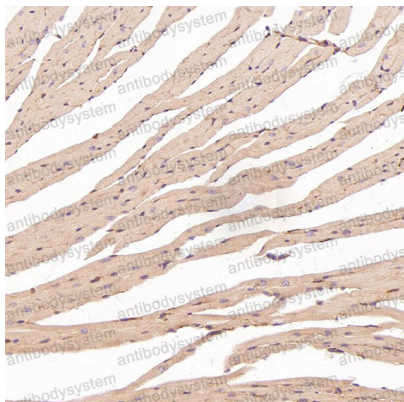
Data Image

**Immunohistochemical**

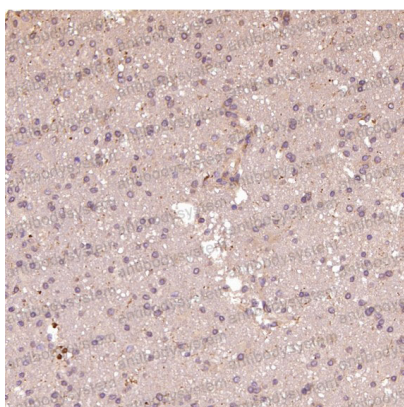
Immunohistochemical analysis of paraffin-embedded Rat liver, using the Antibody at 1:100 dilution.

**Immunohistochemical**

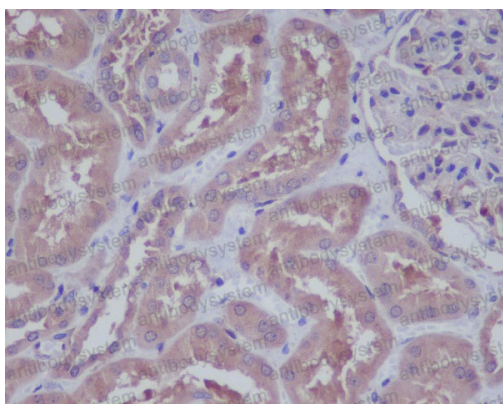
Immunohistochemical analysis of paraffin-embedded Mouse skeletal muscle - gastrocnemius , using the Antibody at 1:100 dilution.

**Immunohistochemical**

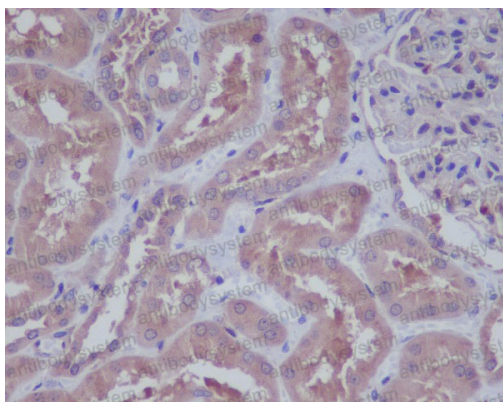
Immunohistochemical analysis of paraffin-embedded Mouse heart, using the Antibody at 1:100 dilution.

**Immunohistochemical**

Immunohistochemical analysis of paraffin-embedded Human glioblastoma, using the Antibody at 1:100 dilution.

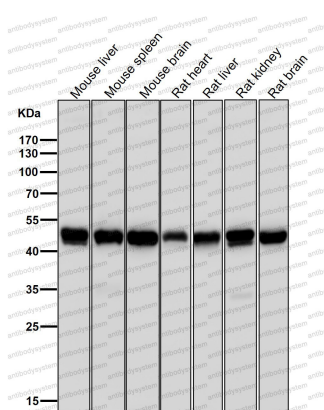
**Immunohistochemical**

Immunohistochemical analysis of paraffin-embedded human kidney, using HAPLN1 Antibody .



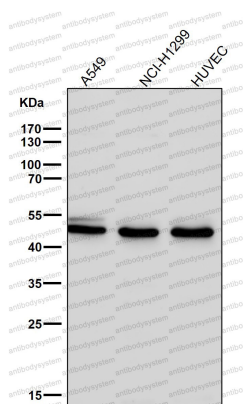
Immunohistochemical analysis of paraffin-embedded human kidney, using HAPLN1 Antibody .

Immunohistochemical



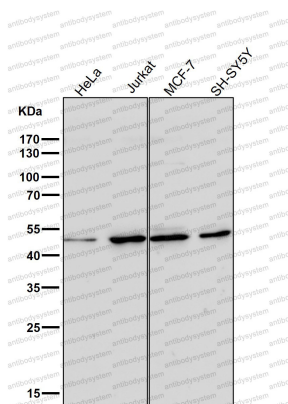
All lanes use the Antibody at 1:1K dilution for 1 hour at room temperature.

Western blot



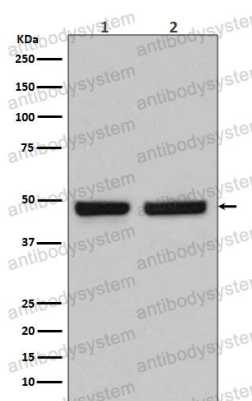
All lanes use the Antibody at 1:1K dilution for 1 hour at room temperature.

Western blot



Western blot

All lanes use the Antibody at 1:1K dilution for 1 hour at room temperature.



Western blot

Western blot analysis of HAPLN1 expression in (1) Caco2 cell lysate; (2) Mouse spleen lysate.