

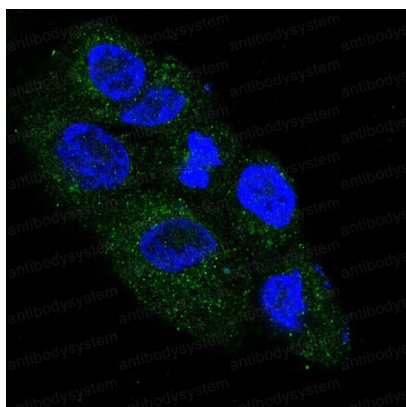
Anti-NGF/Beta-NGF Antibody (R1A91)

Summary

Catalog No.	RHB91701
Clone ID	R1A91
Host species	Rabbit
Tested applications	IF: 1:50-1:200, IHC: 1:100-1:200, WB: 1:1000-1:2000
Species reactivity	Human, Mouse, Rat
Form	Liquid
Storage buffer	0.01M PBS, pH 7.4, 0.05% BSA, 50% Glycerol, 0.05% Sodium azide.
Concentration	1 mg/ml
Purity	>95% by SDS-PAGE.
Clonality	Monoclonal
Isotype	IgG
Applications	IF, IHC, WB
Target	NGF, Beta-NGF, HSAN5, MGC161426, MGC161428, NGFB, proNGF, beta NGF
Purification	Protein A/G purified from cell culture supernatant.
Endotoxin level	Please contact with the lab for this information.
Accession	P01138
Stability and Storage	Use a manual defrost freezer and avoid repeated freeze-thaw cycles. Store at +4 °C short term (1-2 weeks). Store at -20 °C 12 months. Store at -80 °C long term.

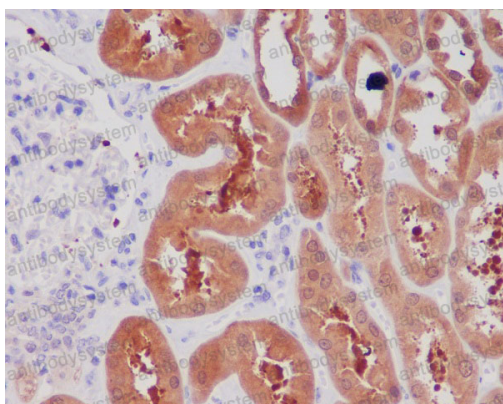
Note For research use only.

Data Image



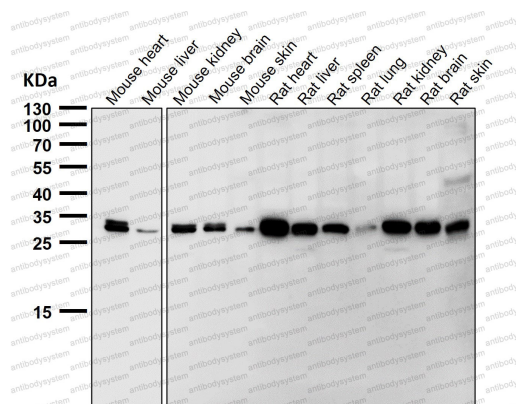
Immunofluorescence

Immunofluorescent analysis of SH-SY5Y cells, using NGF Antibody.



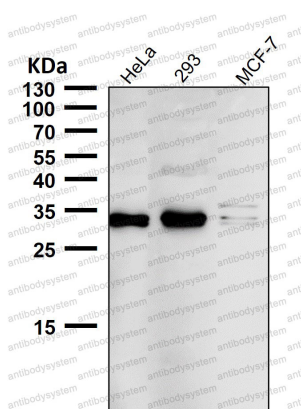
Immunohistochemical

Immunohistochemical analysis of paraffin-embedded human kidney, using NGF Antibody.



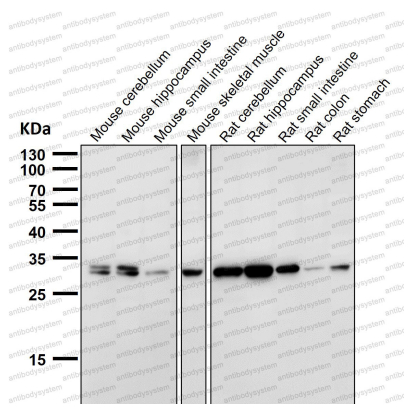
Western blot

All lanes use the Antibody at 1:1K dilution for 1 hour at room temperature.



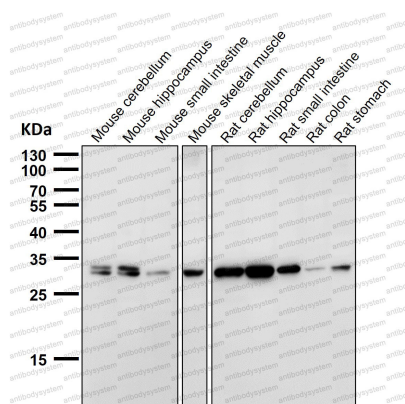
Western blot

All lanes use the Antibody at 1:1K dilution for 1 hour at room temperature.



Western blot

All lanes use the Antibody at 1:1K dilution for 1 hour at room temperature.



Western blot

All lanes use the Antibody at 1:1K dilution for 1 hour at room temperature.