

# Anti-HSPA12A Antibody (R1A90)

## Summary

---

<b>Catalog No.</b>	RHA63501
<b>Clone ID</b>	R1A90
<b>Host species</b>	Rabbit
<b>Tested applications</b>	IF: 1:50-1:200, IHC: 1:100-1:200, IP: 1:20-1:50, WB: 1:1000-1:2000
<b>Species reactivity</b>	Human, Mouse, Rat
<b>Form</b>	Liquid
<b>Storage buffer</b>	0.01M PBS, pH 7.4, 0.05% BSA, 50% Glycerol, 0.05% Sodium azide.
<b>Concentration</b>	1 mg/ml
<b>Purity</b>	>95% by SDS-PAGE.
<b>Clonality</b>	Monoclonal
<b>Isotype</b>	IgG
<b>Applications</b>	IF, IHC, IP, WB
<b>Target</b>	FLJ13874 antibody, Heat shock 70 kDa protein 12A antibody, heat shock 70kD protein 12A antibody, heat shock 70kDa protein 12A antibody, HS12A_HUMAN antibody, Hspa12a antibody, KIAA0417 antibody, Hsp70 12A
<b>Purification</b>	Protein A/G purified from cell culture supernatant.
<b>Endotoxin level</b>	Please contact with the lab for this information.
<b>Accession</b>	O43301

## Recombinant Proteins &amp; Antibodies

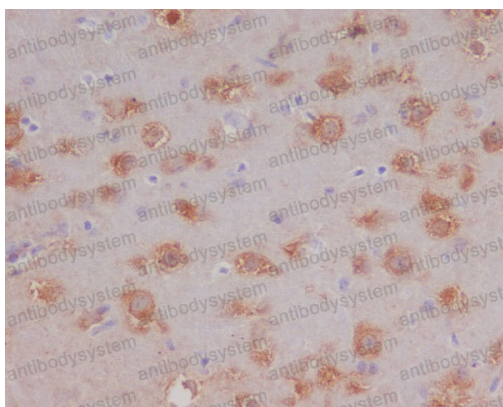
**Stability and Storage**

Use a manual defrost freezer and avoid repeated freeze-thaw cycles.

Store at +4 °C short term (1-2 weeks). Store at -20 °C 12 months. Store at -80 °C long term.

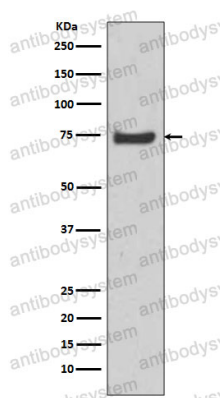
**Note**

For research use only.

**Data Image**

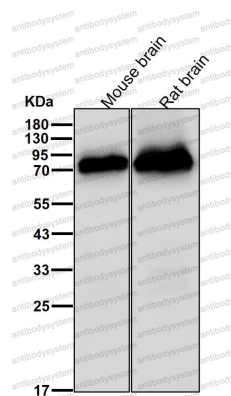
Immunohistochemical analysis of paraffin-embedded mouse brain, using HSPA12A Antibody.

Immunohistochemical



Western blot analysis of HSPA12A expression in U-87 MG cell lysate.

Western blot



Western blot

All lanes use the Antibody at 1:1K dilution for 1 hour at room temperature.