

Anti-TRAM2 Antibody (R1A85)

Summary

Catalog No.	RHG98701
Clone ID	R1A85
Host species	Rabbit
Tested applications	WB: 1:1000-1:2000
Species reactivity	Human, Mouse, Rat
Form	Liquid
Storage buffer	0.01M PBS, pH 7.4, 0.05% BSA, 50% Glycerol, 0.05% Sodium azide.
Concentration	1 mg/ml
Purity	>95% by SDS-PAGE.
Clonality	Monoclonal
Isotype	IgG
Applications	WB
Target	KIAA0057, TRAM like protein, Tram2, Translocating chain associating membrane protein 2, Translocation associated membrane protein 2, TRAM2
Purification	Protein A/G purified from cell culture supernatant.
Endotoxin level	Please contact with the lab for this information.
Accession	Q15035

Stability and Storage

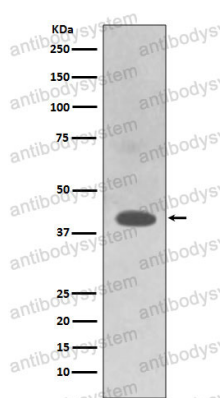
Use a manual defrost freezer and avoid repeated freeze-thaw cycles.

Store at +4 °C short term (1-2 weeks). Store at -20 °C 12 months. Store at -80 °C long term.

Note

For research use only.

Data Image



Western blot

Western blot analysis of TRAM2 expression in HepG2 cell lysate.