

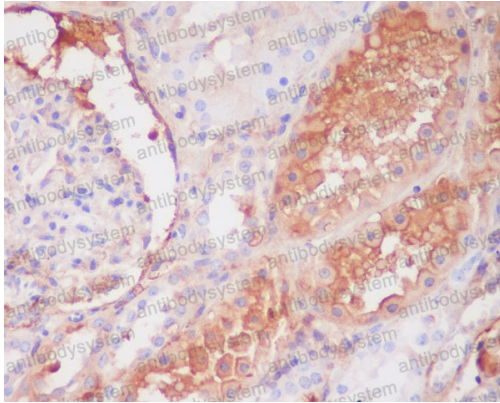
Anti-C9 Antibody (R1A80)

Summary

Catalog No.	RHC00501
Clone ID	R1A80
Host species	Rabbit
Tested applications	IHC: 1:100-1:200, IP: 1:20-1:50, WB: 1:1000-1:2000
Species reactivity	Human
Form	Liquid
Storage buffer	0.01M PBS, pH 7.4, 0.05% BSA, 50% Glycerol, 0.05% Sodium azide.
Concentration	1 mg/ml
Purity	>95% by SDS-PAGE.
Clonality	Monoclonal
Isotype	IgG
Applications	IHC, IP, WB
Target	Complement component C9, Comple Complement component C9bment component C9a, Complement C9
Purification	Protein A/G purified from cell culture supernatant.
Endotoxin level	Please contact with the lab for this information.
Accession	P02748
Stability and Storage	Use a manual defrost freezer and avoid repeated freeze-thaw cycles. Store at +4 °C short term (1-2 weeks). Store at -20 °C 12 months. Store at - 80 °C long term.

Note For research use only.

Data Image



Immunohistochemical

Immunohistochemical analysis of paraffin-embedded human kidney, using C9 Antibody.



Western blot

Western blot analysis of C9 expression in Human fetal liver lysate.