

# Anti-TRAF6 Antibody (R1A79)

## Summary

---

<b>Catalog No.</b>	RHJ88301
<b>Clone ID</b>	R1A79
<b>Host species</b>	Rabbit
<b>Tested applications</b>	IF: 1:50-1:200, IHC: 1:100-1:200, WB: 1:1000-1:2000
<b>Species reactivity</b>	Human, Mouse, Rat
<b>Form</b>	Liquid
<b>Storage buffer</b>	0.01M PBS, pH 7.4, 0.05% BSA, 50% Glycerol, 0.05% Sodium azide.
<b>Concentration</b>	1 mg/ml
<b>Purity</b>	>95% by SDS-PAGE.
<b>Clonality</b>	Monoclonal
<b>Isotype</b>	IgG
<b>Applications</b>	IF, IHC, WB
<b>Target</b>	TNF receptor-associated factor 6, E3 ubiquitin-protein ligase TRAF6, Interleukin-1 signal transducer, RING finger protein 85, TRAF6, RNF85, TRAF 6, TRAF-6, TRAF6
<b>Purification</b>	Protein A/G purified from cell culture supernatant.
<b>Endotoxin level</b>	Please contact with the lab for this information.
<b>Accession</b>	Q9Y4K3

## Recombinant Proteins &amp; Antibodies

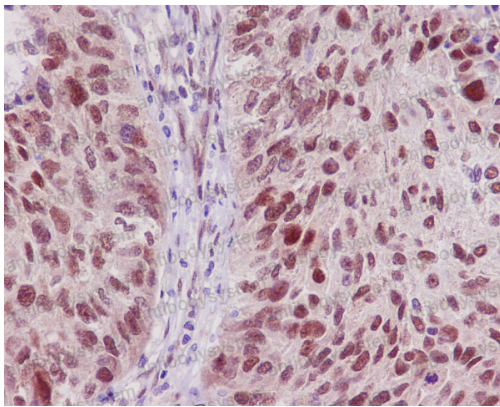
**Stability and Storage**

Use a manual defrost freezer and avoid repeated freeze-thaw cycles.

Store at +4 °C short term (1-2 weeks). Store at -20 °C 12 months. Store at -80 °C long term.

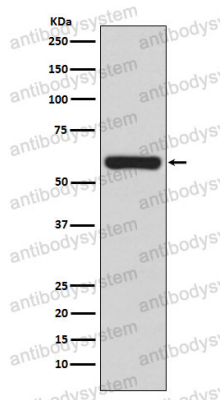
**Note**

For research use only.

**Data Image**

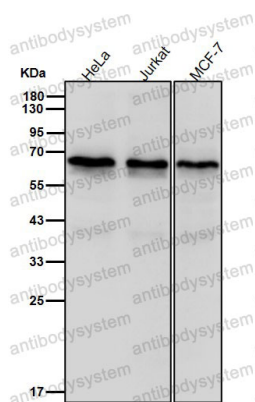
Immunohistochemical

Immunohistochemical analysis of paraffin-embedded human lung carcinoma, using TRAF6 Antibody.



Western blot

Western blot analysis of TRAF6 expression in Jurkat cell lysate.



Western blot

All lanes use the Antibody at 1:2k dilution for 1 hour at room temperature.