

Anti-MEK1/2 Antibody (R1A76)

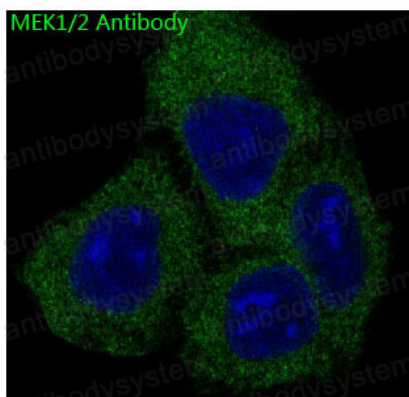
Summary

| | |
|------------------------------|---|
| Catalog No. | RHF95503 |
| Clone ID | R1A76 |
| Host species | Rabbit |
| Tested applications | IF: 1:50-1:200, IHC: 1:100-1:200, IP: 1:20-1:50, WB: 1:1000-1:5000 |
| Species reactivity | Human, Mouse, Rat |
| Form | Liquid |
| Storage buffer | 0.01M PBS, pH 7.4, 0.05% BSA, 50% Glycerol, 0.05% Sodium azide. |
| Concentration | 1 mg/ml |
| Purity | >95% by SDS-PAGE. |
| Clonality | Monoclonal |
| Isotype | IgG |
| Applications | IF, IHC, IP, WB |
| Target | ERK activator kinase 1, MAP kinase kinase 1, MAP2K1, MAPK/ERK kinase 1, MAPKK 1, MAPKK1, MEK1, MP2K1, PRKMK1, kinase MEK1, MEK1/2 |
| Purification | Protein A/G purified from cell culture supernatant. |
| Endotoxin level | Please contact with the lab for this information. |
| Accession | Q02750, P36507 |
| Stability and Storage | Use a manual defrost freezer and avoid repeated freeze-thaw cycles. Store at +4 °C short term (1-2 weeks). Store at -20 °C 12 months. Store at -80 °C long term. |

Note

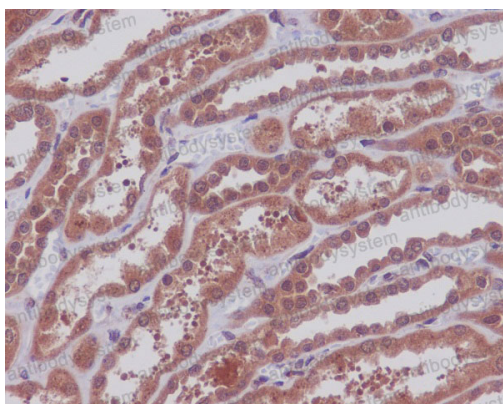
For research use only.

Data Image



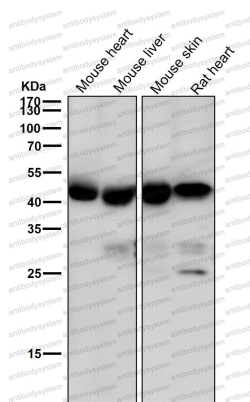
Immunofluorescence

Immunofluorescent analysis of Hela cells, using MEK1/2 Antibody .



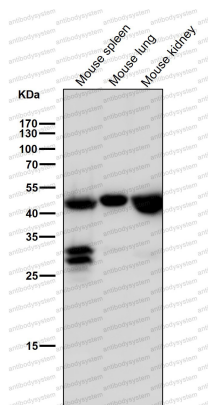
Immunohistochemical

Immunohistochemical analysis of paraffin-embedded human kidney, using MEK1/2 Antibody.



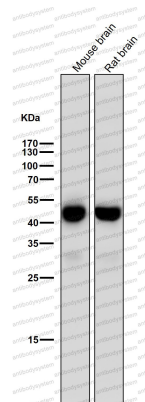
Western blot

All lanes use the Antibody at 1:5K dilution for 1 hour at room temperature.



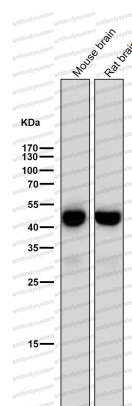
Western blot

All lanes use the Antibody at 1:5K dilution for 1 hour at room temperature.



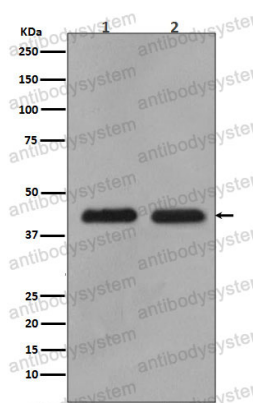
Western blot

All lanes use the Antibody at 1:5K dilution for 1 hour at room temperature.



Western blot

All lanes use the Antibody at 1:5K dilution for 1 hour at room temperature.



Western blot

Western blot analysis of MEK1/2 expression in (1) 293T cell lysate; (2) A549 cell lysate.