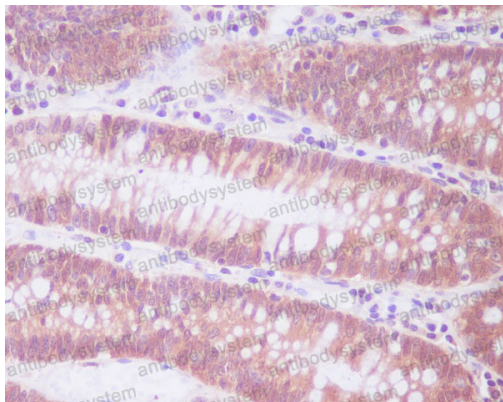


Anti-ENO1/Alpha-enolase Antibody (R1A52)

Summary

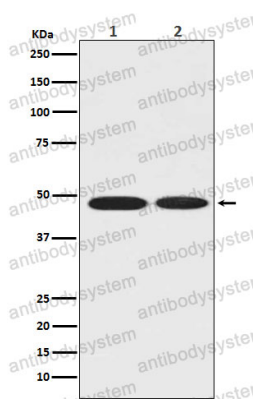
| | |
|------------------------------|---|
| Catalog No. | RHC21201 |
| Clone ID | R1A52 |
| Host species | Rabbit |
| Tested applications | IF: 1:50-1:200, IHC: 1:100-1:200, IP: 1:20-1:50, WB: 1:1000-1:2000 |
| Species reactivity | Human, Mouse, Rat |
| Form | Liquid |
| Storage buffer | 0.01M PBS, pH 7.4, 0.05% BSA, 50% Glycerol, 0.05% Sodium azide. |
| Concentration | 1 mg/ml |
| Purity | >95% by SDS-PAGE. |
| Clonality | Monoclonal |
| Isotype | IgG |
| Applications | IF, IHC, IP, WB |
| Target | ENO1, ENO1L1, MBP-1, MPB1, NNE, PPH, ENO1 |
| Purification | Protein A/G purified from cell culture supernatant. |
| Endotoxin level | Please contact with the lab for this information. |
| Accession | P06733 |
| Stability and Storage | Use a manual defrost freezer and avoid repeated freeze-thaw cycles. Store at +4 °C short term (1-2 weeks). Store at -20 °C 12 months. Store at -80 °C long term. |
| Note | For research use only. |

Data Image



Immunohistochemical

Immunohistochemical analysis of paraffin-embedded human colon, using ENO1 Antibody.



Western blot

Western blot analysis of ENO1 in (1)MCF-7 whole cell lysate; (2)Rat brain tissue lysate.