

# Anti-SATB2 Antibody (R1A49)

## Summary

---

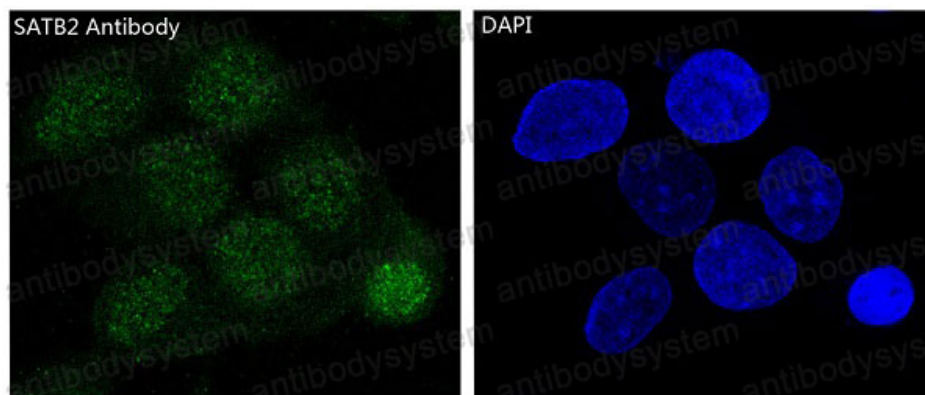
<b>Catalog No.</b>	RHK53201
<b>Clone ID</b>	R1A49
<b>Host species</b>	Rabbit
<b>Tested applications</b>	IF: 1:50-1:200, IHC: 1:100-1:200, WB: 1:1000-1:2000
<b>Species reactivity</b>	Human, Mouse, Rat
<b>Form</b>	Liquid
<b>Storage buffer</b>	0.01M PBS, pH 7.4, 0.05% BSA, 50% Glycerol, 0.05% Sodium azide.
<b>Concentration</b>	1 mg/ml
<b>Purity</b>	>95% by SDS-PAGE.
<b>Clonality</b>	Monoclonal
<b>Isotype</b>	IgG
<b>Applications</b>	IF, IHC, WB
<b>Target</b>	GLSS, SATB family member 2, SATB homeobox 2, SATB2, Special AT rich sequence binding protein 2, SATB2
<b>Purification</b>	Protein A/G purified from cell culture supernatant.
<b>Endotoxin level</b>	Please contact with the lab for this information.
<b>Accession</b>	Q9UPW6
<b>Stability and Storage</b>	Use a manual defrost freezer and avoid repeated freeze-thaw cycles. Store at +4 °C short term (1-2 weeks). Store at -20 °C 12 months. Store at -80 °C long term.

**Note**

For research use only.

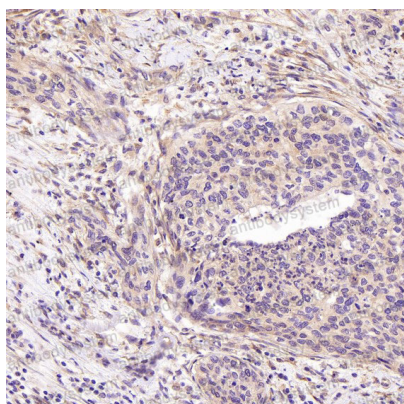
## Data Image

---



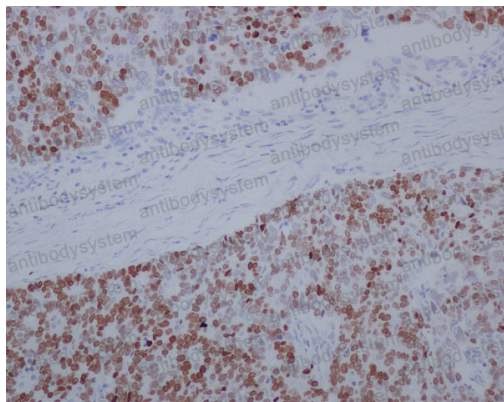
Immunofluorescent analysis of SH-SY5Y cells, using SATB2 Antibody .

Immunofluorescence



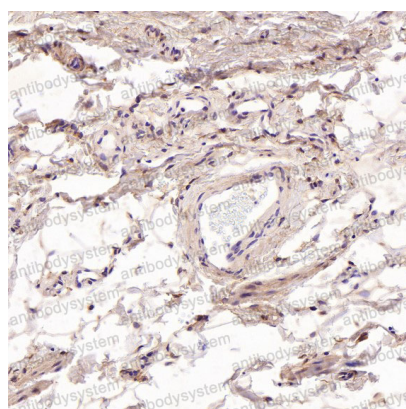
Immunohistochemical analysis of paraffin-embedded Human cervical cancer, using the Antibody at 1:100 dilution.

Immunohistochemical



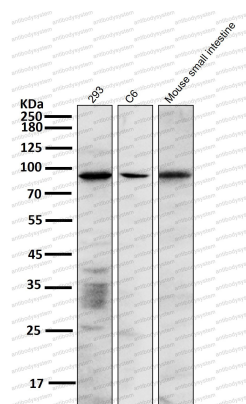
Immunohistochemical

Immunohistochemical analysis of paraffin-embedded human stomach cancer, using SATB2 Antibody.



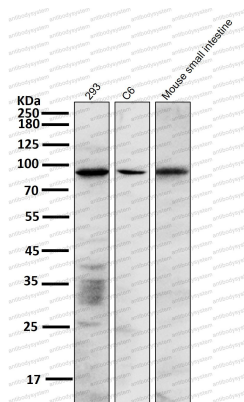
Immunohistochemical

Immunohistochemical analysis of paraffin-embedded Human testis cancer, using the Antibody at 1:100 dilution.



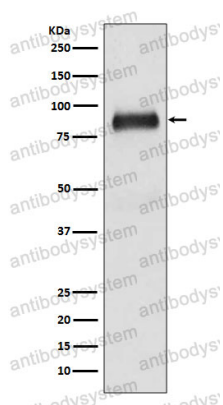
Western blot

All lanes use the Antibody at 1:2K dilution for 1 hour at room temperature.



Western blot

All lanes use the Antibody at 1:2K dilution for 1 hour at room temperature.



Western blot

Western blot analysis of SATB2 expression in Saos-2 cell lysate.