

Anti-CD192/CCR2 Antibody (R1A25)

Summary

Catalog No.	RHE33201
Clone ID	R1A25
Host species	Rabbit
Tested applications	FCM: 1:20-1:100, IF: 1:50-1:200, IHC: 1:100-1:200, IP: 1:20-1:50, WB: 1:1000-1:2000
Species reactivity	Human
Form	Liquid
Storage buffer	0.01M PBS, pH 7.4, 0.05% BSA, 50% Glycerol, 0.05% Sodium azide.
Concentration	1 mg/ml
Purity	>95% by SDS-PAGE.
Clonality	Monoclonal
Isotype	IgG
Applications	FCM, IF, IHC, IP, WB
Target	C-C chemokine receptor type 2, C-C CKR-2, CC chemokine receptor type 2, CC CKR 2, CC-CKR-2, CCCKR2, CCR 2, CCR-2, CCR1L, CCR2, CCR2
Purification	Protein A/G purified from cell culture supernatant.
Endotoxin level	Please contact with the lab for this information.
Accession	P41597

Recombinant Proteins & Antibodies

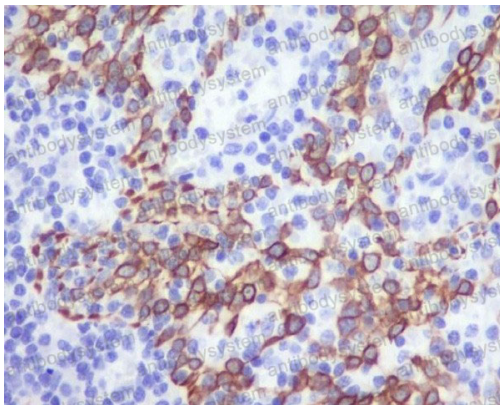
Stability and Storage

Use a manual defrost freezer and avoid repeated freeze-thaw cycles.

Store at +4 °C short term (1-2 weeks). Store at -20 °C 12 months. Store at -80 °C long term.

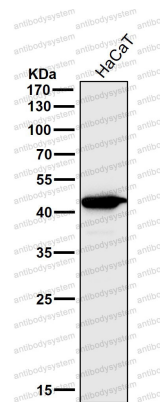
Note

For research use only.

Data Image

Immunohistochemical

Immunohistochemical analysis of paraffin-embedded human tonsil, using CCR2/CKR2 Antibody.



Western blot

All lanes use the Antibody at 1:1K dilution for 1 hour at room temperature.